



staron®

Solid Surfaces

Create without limits



Create without limits

Endlessly practical, yet strikingly beautiful.

That's the strength of Staron® solid surfaces, which offer the durability of stone and the flexibility of hardwood. Available in 89 different colours and natural textures, Staron's non-porous and uniform design can be shaped into everything from seamless curved walls to complex geometric patterns.

Please refer to the technical quality section on pages 108-109 for more details of Staron's creative versatility and practical functionality.

staron[®]
Solid Surfaces




3-Dimensional shapes

With its impressive thermoforming capability, Staron® adds another level of depth and sophistication to commercial interiors. Quite literally, as it can be fashioned into precise and complex three-dimensional shapes that bring added energy to installations and greater standout to furniture and fittings. This specialist heating and shaping technique is often employed by designers and architects keen to break free of the constraints of modern design, resulting in the creation of truly unique and original sculptures and shapes.



Brighter thinking

Whether being used playfully or practically, light plays an essential role in all design. Staron® solid surfaces can be inset with lights to create dynamic backlighting for logos and text, while thickness can be easily adjusted to increase, or decrease, translucency and luminosity. Bespoke lettering and logos can also be engraved into Staron's surface to add greater standout, while intricate patterns and designs can be embedded into the surface through the process of sublimation.



Seamlessly simple

No gaps. No joints. No compromise. Thanks to their consistent colour and texture Staron® sheets can be bonded together to create a smooth and joint-free surface that feels flawless to the touch and adds value to any design. For greater standout still, contrasting colours can be seamlessly bonded together through the process of inlaying to create a truly striking finish.

In kitchen and bathroom environments, Staron® solid surface sinks and bowls can be seamlessly bonded into the surface.

Flying colours

Colour is a powerful tool. It can be used to soothe and calm, draw attention and spark reaction. It's why Staron® offer 88 different colour options, many of which have been created in collaboration with leading colour trend experts.

Staron's premium Supreme™ collection features rich veined designs directly inspired by nature, while the Tempest® range features light-reflecting natural stone.




Hygienically practical

While almost every commercial setting differs, all can benefit from Staron's seamless surfaces that are proven to prevent the spread of infection and bacteria. As a result of this, Staron® is NSF-51 food-safe accredited.

Furthermore, Staron® surfaces are easy to maintain and even easier to clean thanks to their non-porous, chemically inert design and impressive heat and chemical resistance.





Enduring durability

Staron® surfaces have been developed to offer exceptional long-term durability in any commercial environment. In the unlikely event of damage, Staron® can be discreetly repaired thanks to its homogenous composition, eliminating costly and wasteful repairs. Staron® surfaces are also fire-retardant, shock-resistant and fully ASIAD-compliant, in addition to meeting the HAL Design Performance Standard.



Sustained quality

Staron® believe in doing things the right way, right away. It's why every product is Greenguard certified for low emissions together with an eco-friendly range of Staron® décors with SCS certification (Scientific Certification System).

Staron® also understands that trust forms the foundation of any partnership, which is why all solid surfaces come with a 10 year warranty.

Projects

Choose Staron® for your next project.

Find inspiration in projects from around the world that have harnessed the beauty and versatility of Staron® solid surfaces.

staron®
Solid Surfaces

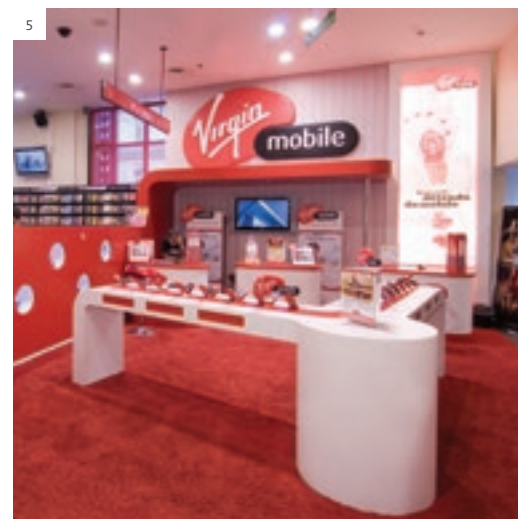
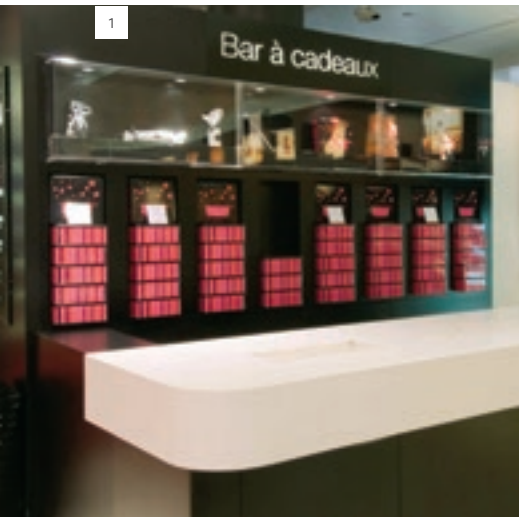
Retail

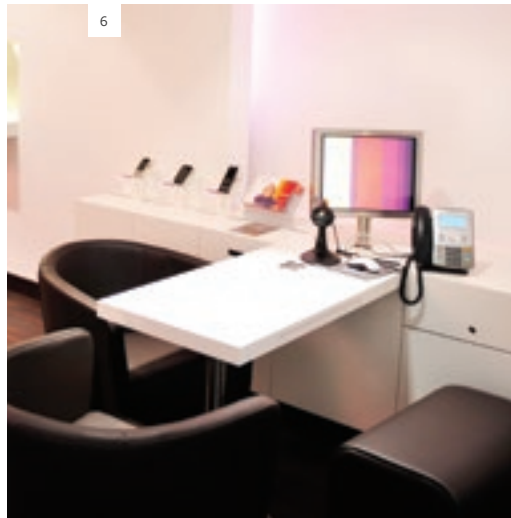
In a world where an online purchase can be made with a single click, it's never been more important for retail environments to provide a rich, rewarding and immersive physical touchpoint. At Staron®, we believe great design is key to achieving this, as it provides a unique opportunity to tell brand stories in a way that's truly unique and engaging.



A display of affection

There's a great art to effective retail displays, as products need to grab attention without detracting from each other. Pure White Staron® was used by South Korean retailer Kuho to create a series of bold, angular shelves with inset down lights to achieve this exact feat. This was strikingly complemented with Onyx Staron® seating throughout the store.





6



7



8



9



10

A lasting impression

For a retail environment to be truly successful, it needs to be both daringly original and relentlessly hardwearing. It's why Staron® is used by retailers across the globe to create luxurious and inventive showrooms capable of withstanding the impact of thousands of daily consumers.



Cool customers

Rather fittingly for a skiwear boutique, Dazzling White Staron® was employed by Sportalm to create an in-store alpine escape. The boutique's sweeping shelves cleverly feature integrated hanging devices and LEDs to ensure every item of skiwear is shown in the best possible light.



Design without limits

While Staron® is most commonly known for countertops and furniture, in skilled hands it can become something altogether more unexpected and magical. At the Noon Square shopping centre in Myeongdong for example, an intricate 3D Staron® installation climbs the walls like a spider's web.





Inclusive by design

Accessibility is an often overlooked aspect of retail design. However, this was far from the case at the Glotz healthcare supply store. Every seamless Staron® counter and display was designed to be fully wheelchair accessible. Additionally, Quasar White Staron® was used to create the store's striking logo-clad wall.





Walk this way

Leading American shoe retailer Stuart Weitzman required an expressive and inviting way to guide in-store customers through their latest collection. To achieve this, extensively thermoformed Staron® panels were used to create a series of organic sculptures on both the store's walls and shop floor that effortlessly showcased the new range, while also being beautiful in their own right.

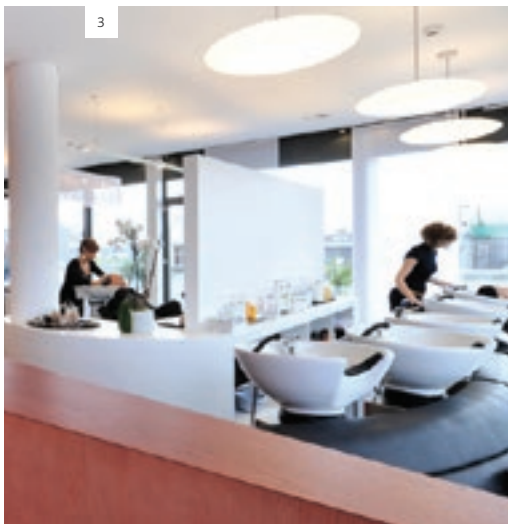
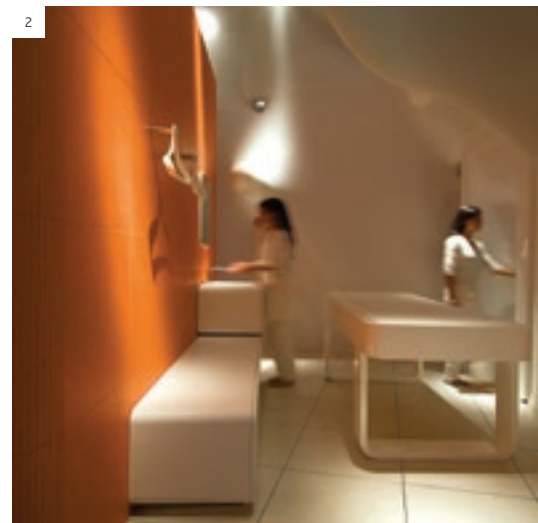


Heidi.com Store, Switzerland

When designing their first Flagship store, leading online fashion brand Heidi.com wanted a solution that would effortlessly bring together their on and offline worlds in a way that would surprise and engage consumers. To bring their vision alive, they collaborated with world-renowned Zaha Hadid Architects and Staron® to fashion a modern interior space awash with light and interactive elements.

With digital playing such a pivotal role in the company's success, a key deliverable for the new store was a secure housing unit for a giant digital screen. Staron® was chosen for the task, due to its hardwearing properties and ability to be thermoformed into free-flowing curves – a key motif of Zaha Hadid's work. Complementing the unit were a series of curved walls and display plinths in Pure White Staron®, again reflecting the architect's signature style.





The beauty of Staron®

While any retail space can be enhanced by the strength and versatility of Staron®, few sectors benefit from its non-porous quality more than the world of beauty. An invaluable addition to countless salons, massage rooms, spas and saunas around the globe, Staron® surfaces can be easily cleaned to ensure exceptional levels of hygiene.



Creating a gripping display

At the International Motor Show in Frankfurt, leading tyre manufacturer Continental used Staron® countertops and stands to showcase their latest innovations in style. A perfect example of how Staron® designs are adept at playing an understated supporting role as well as forming the centrepiece of a retail space.





An enticing blend

In a high footfall setting such as an airport coffee shop, durability is key. With Staron®, such functionality soon became beautiful. Used alongside wood veneers it created organic shapes and a hardwearing surface that drew the eye, while rainforest-themed patterns, applied to the Staron® surface using the sublimation printing technique, helped create an inviting and inventive space.

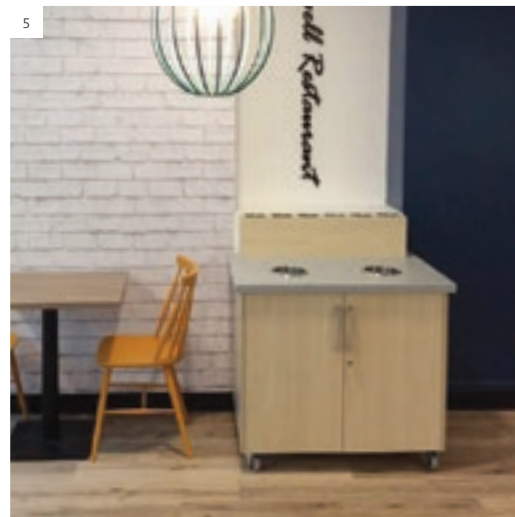
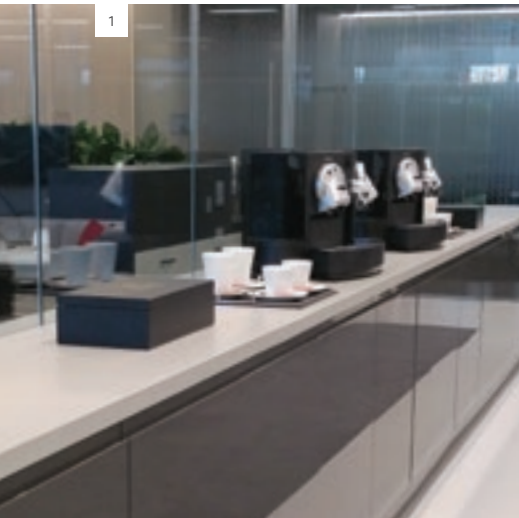
Hospitality

While Staron's strength, safety and seamless joints all appeal, it's the versatility of the material that has long made it a trusted choice in the hospitality sector. After all, few environments have such an extensive and varied list of applications where it can make a genuine difference.



Hardworking elegance

Achieving outstanding standout in a busy shopping centre is no easy feat. The solution was to create a piece of highly sculptural signage made entirely out of thermoformed Staron®. Inspired by the café's logo, each intricately shaped letter was fixed into a curved base to create an elegant entrance and boundary.





Serving up choice

By their very design, busy cafeterias need to be able to withstand everything from spills and stains, to scrapes and scratches. The durability and flexibility of Staron® means you'll find it being used in a number of widely differing applications in such environments, on everything from worktops and seating to bins and cutlery holders.

6 / Merthyr Tydfil College, UK. Architect: Boyes Rees of Cardiff, Manufacturer: Limebright of Newport and Counterline of Liverpool.

7 / Stourbridge College, UK. Apex Designs and Products Ltd.

8 and 10 / Lotte Canteen, South Korea. 9 / Novartis HQ, Greece. Architect: Sgoutas Architects.

CAFFÈ



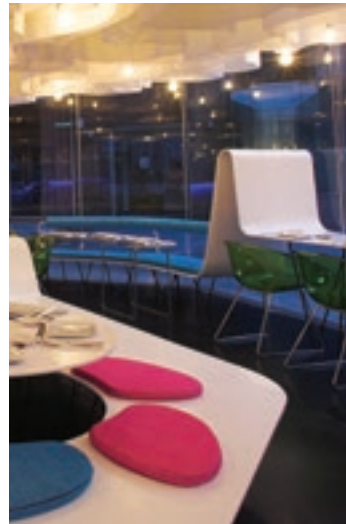


Caffé Rizzoli, UK

In Sheffield's super busy Meadowhall shopping centre, standing out from the retail masses requires exceptional design. So when Caffé Rizzoli were creating their new eatery and Prosecco bar, they wanted contemporary seating, counters and surfaces that could withstand the hustle and bustle of both the kitchen and shopping centre, while also providing an elegant space where people could simply unwind.

Staron® Bright White was chosen for the eatery's seating, kitchen surfaces and food service areas. Thanks to the product's versatility and strength, sweeping thermoformed shapes could be effortlessly created for the perimeter that allowed for the installation of recessed lighting and glass screens. The underside of a public spiral staircase was also cleverly designed as the base for the Caffé Rizzoli kitchen.

With no visible joints and smooth, non-porous surfaces, Staron® provided Caffé Rizzoli with an easy to clean, robust solution that attracted attention, not bacteria. More impressively still, it helped create a place of calm in one of the UK's busiest shopping centres.



Deliciously versatile

In an environment where creativity is served up daily, Staron® provided an equally imaginative and versatile option. The non-porous surface made it a safe and hygienic option, while its ability to be shaped into seamless, smooth forms ensured remarkable design was on the menu from day one.



Supreme in every sense

While every Staron® colour delivers vibrancy and versatility, the premium Supreme™ collection adds even greater visual standout. Each contemporary option in the collection features random, veined patterns that are directly inspired by nature, enabling designers to create the effect of marble and natural stone at a fraction of the cost.





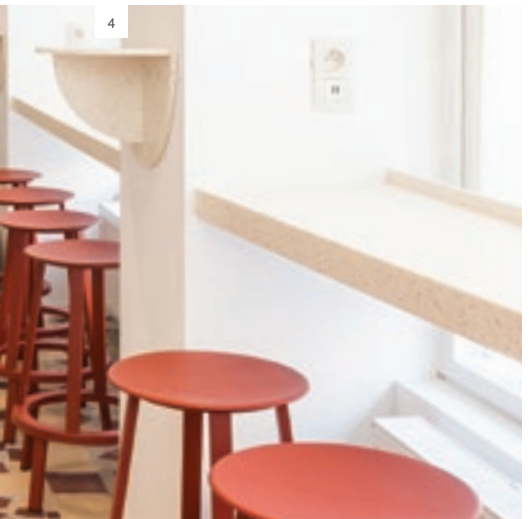
Indó Café, Australia

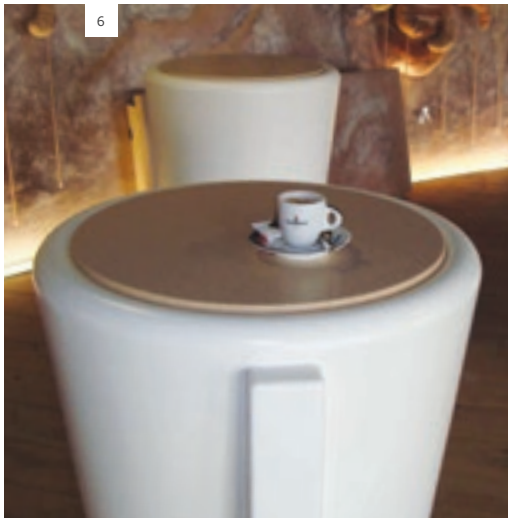
As one of 17 food outlets in Canberra's biggest shopping centre, attracting diners in numbers to Indo Café required more than simply delicious food. It required architectural daring. The solution was a distinctive frontage in vivid Sunflower Staron® that was meticulously detailed with an elegant and contrasting graphic motif.

Used to create a continuous and seamless surface across the café's counter, bench tops and curved front of house desk, the application of Staron® also ensured surfaces could be easily wiped clean – essential in any bustling food environment. Impossible to miss, by rebelling against a safe white palette the café quickly attracted the interest of customers and design judges alike.

"The Indo Café features a particularly vibrant yellow and experiments with curves, fixtures and laser cut-outs to create an eye-catching location in a busy food court."

Nicky Lobo, Habitus Magazine





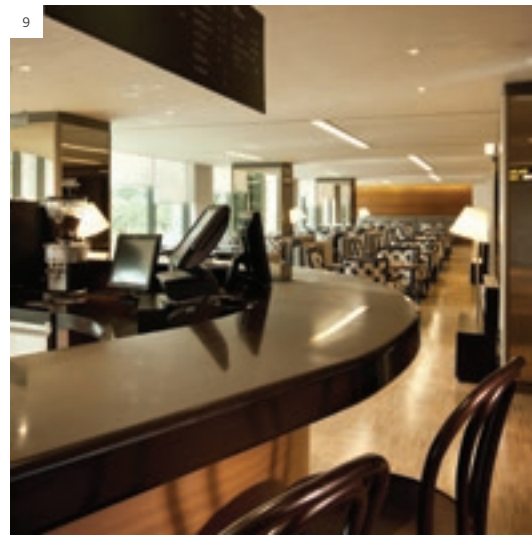
6



7



8



9



10

Refreshingly flexible

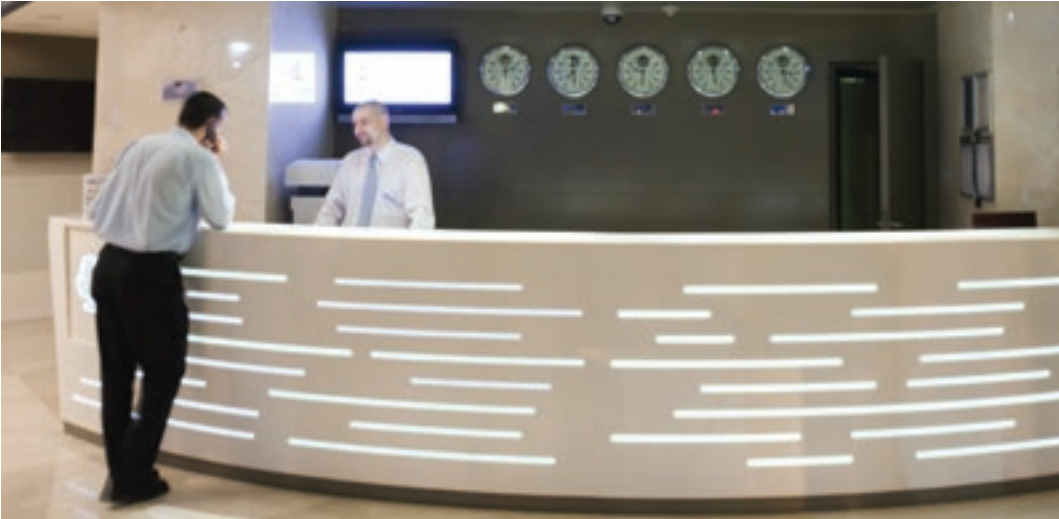
Sweeping curves. Sharp lines. Bright tones. The compelling reasons for using Staron® solid surfaces in bar and restaurant areas quickly add up – unlike stains and bacteria, thanks to its non-porous, waterproof design.





A meeting of moods

Music aside, nothing is more integral to creating a pulsating nightclub ambience than lighting. Through the use of Bright White Staron®, the stone-walled interior of the Adagio Club was brought dynamically to life with sharp, contrasting modern lines that playfully reflect the venue's many lasers and lights.



Warmer welcome

At the DoubleTree Hilton Hotel, Staron® has been used to provide guests walking into reception with a lasting first impression. The curved and illuminated solid surface desk features the Hilton Double Tree iconic logo and creates a warm, inviting space that remains in the minds of guests long after checkout.



Five-star luxury, first-class design

The designers of the flagship Riley Hotel wanted to create an interior space that reflected the natural beauty of the location, without interrupting the direct views to the esplanade. Their award-winning solution used thermoformed Supreme™ Delphi Staron® cladding around the existing columns to draw the eye over the pool and exterior.

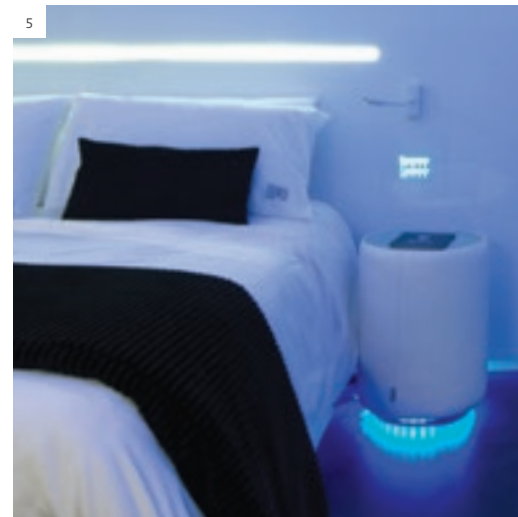




Marriott Renaissance Barcelona Fira Hotel, Spain

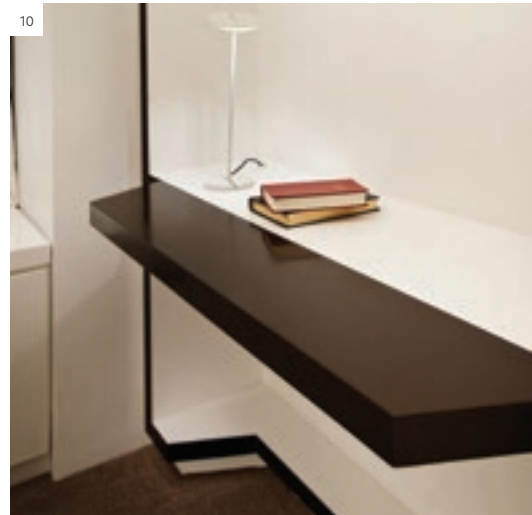
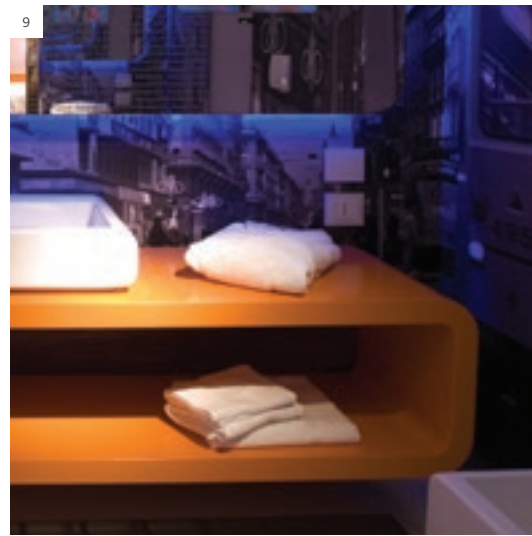
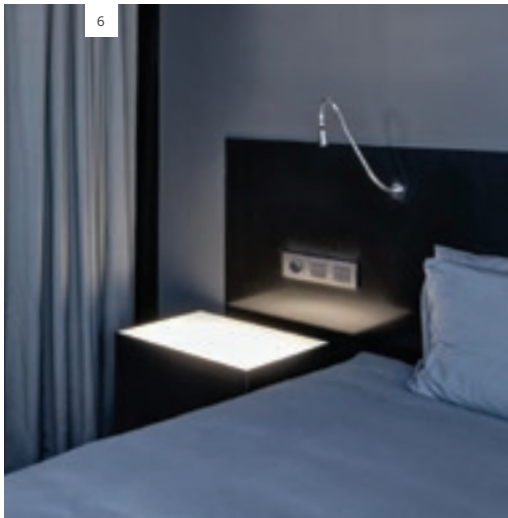
When updating the four-star Renaissance Barcelona Fira Hotel, five-star practicality was firmly front of mind with designers. Their solution was to choose two shades of Staron®, which were selected for use across the hotel's 340+ rooms, in addition to most bathroom and public areas.

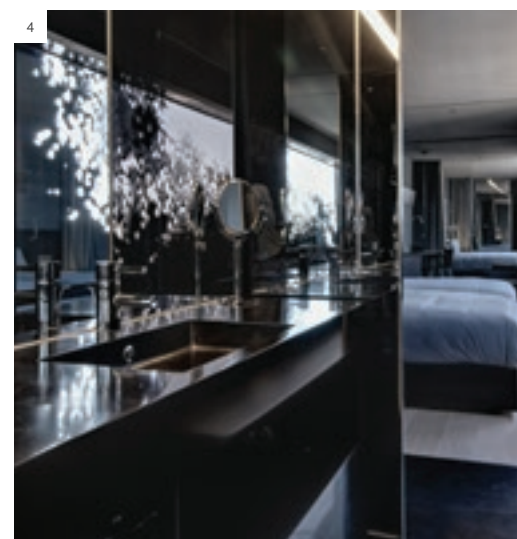
Chosen for its flawlessly smooth and seamless finish, Staron's sophisticated blend of natural materials and thermoset acrylic polymers was quickly put to use on everything from the hotel's curved basins to the sleek bathroom countertops. The result? Beautifully stylish and durable grout-free surfaces that provide the exceptional practicality and hygiene demanded of any luxury commercial setting.

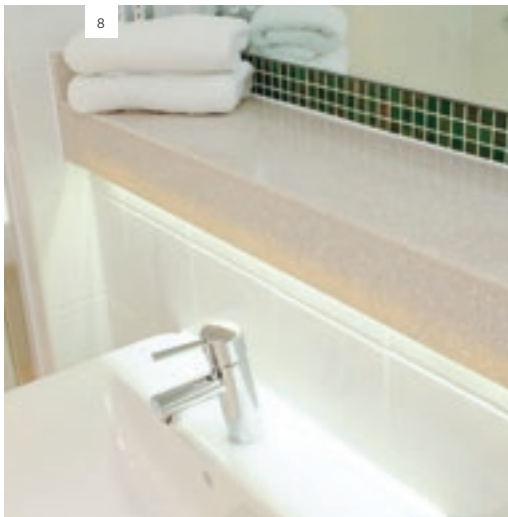
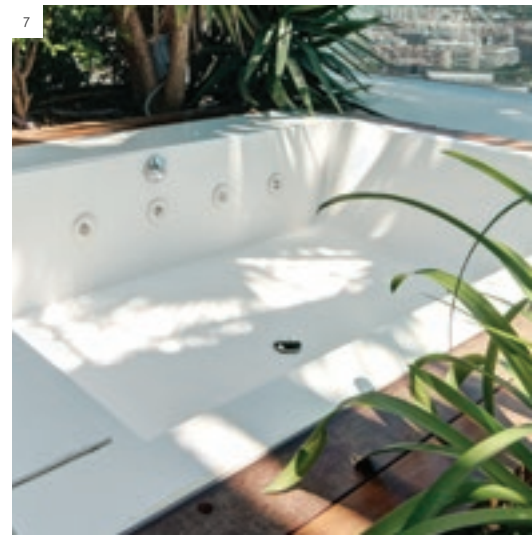


Beautifully accommodating

Quick resets. Regular makeovers. Awkward spaces. Staron® provides a versatile and hardwearing solution to the many unique challenges faced when designing a hotel room. Intricate shapes can be easily created that optimise limited space, bringing stylish practicality to any architect's vision.







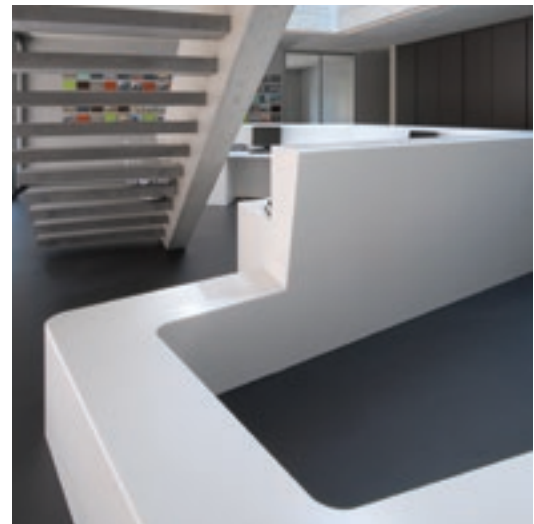
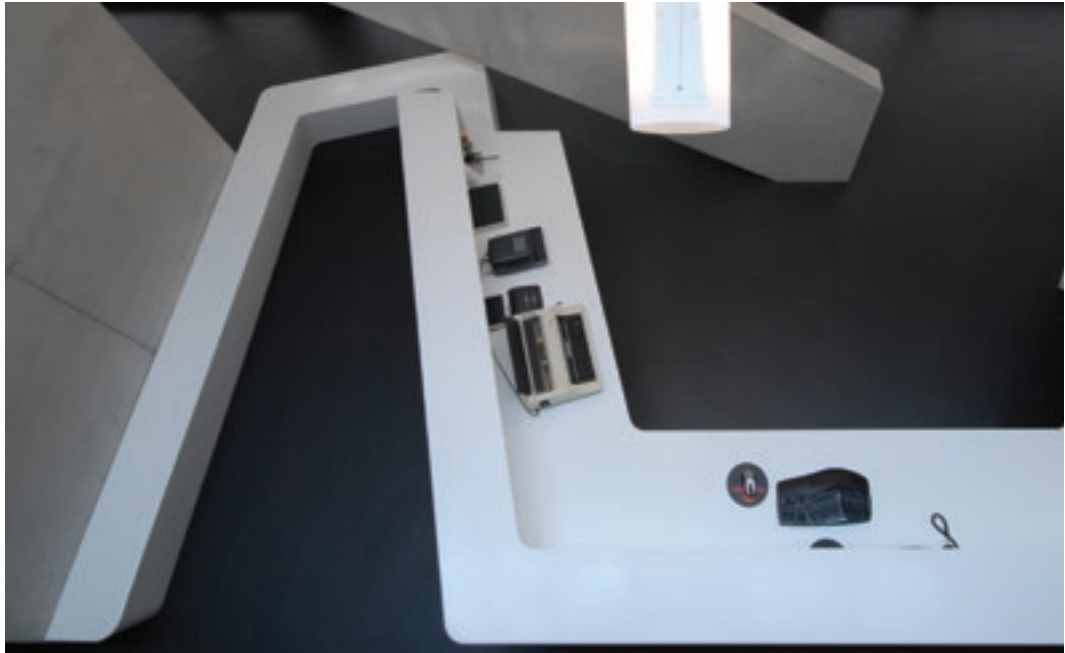
Comfort without compromise

While renowned for its resistance to heat, water and bacteria, Staron® brings more than simply hygiene to a hotel bathroom. It brings design freedom via intricately shaped thermoformed sinks, shelves and worktops. It brings stylish ease via pre-cast sinks. Above all though, it brings added safety for guests.



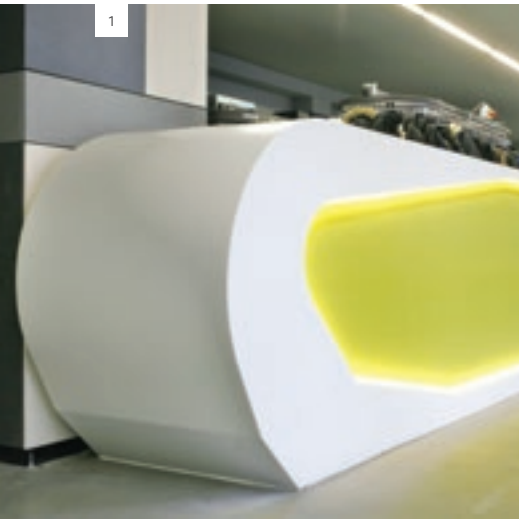
Workspace

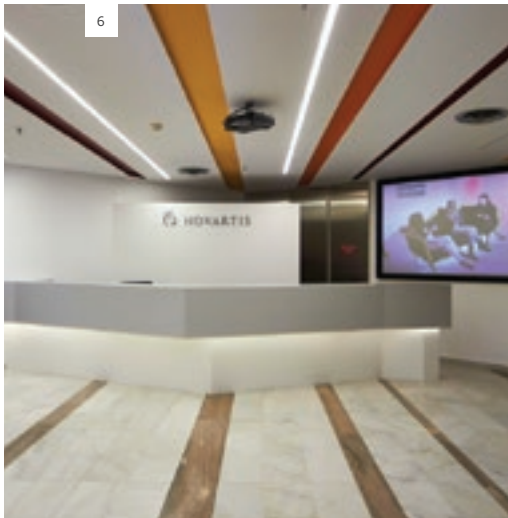
When designing an office or school it's not simply about creating a space where you can work, it's about creating an environment where you want to work. For hours on end, day-after-day. Staron® provides a perfect choice for such environments, delivering the long-term durability and functionality required, without ever constricting creativity.



Leading by example

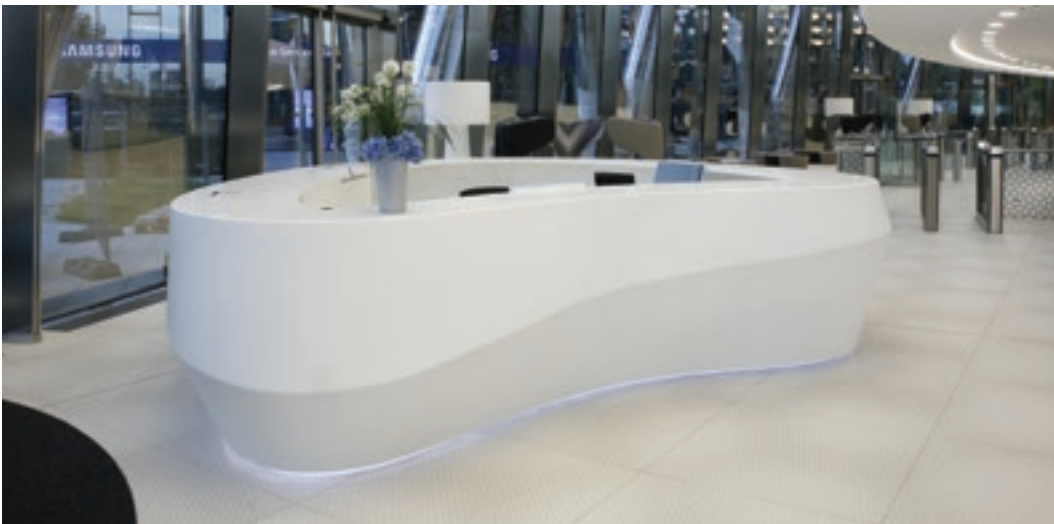
When it comes to architectural challenges, few are greater than designing a waiting area for your very own studio. One that wows and reassures clients with equal measure. The solution by Lämmler Architektur was a series of intricately flowing seamless Staron® shapes, complemented with a back-lit sublimated logo.





A great reception

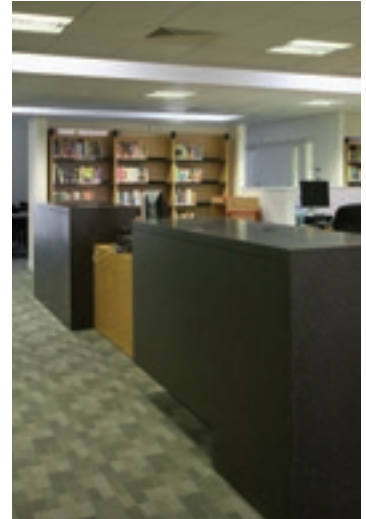
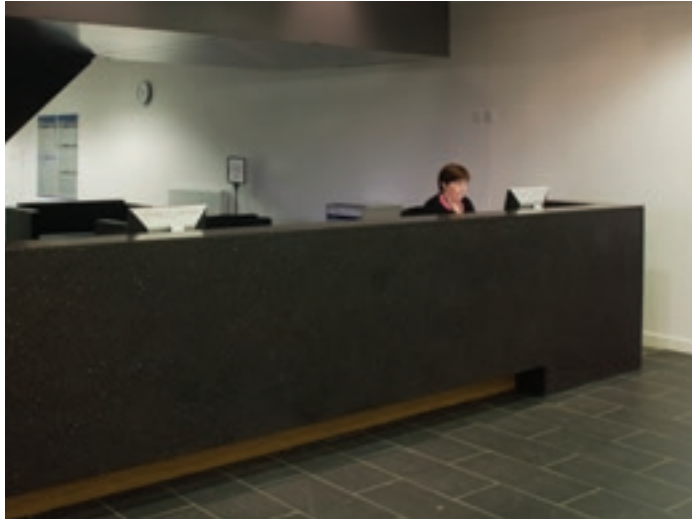
Reception areas do more than provide a warm welcome. They set the tone for the whole building and provide a hardwearing space for phones and paperwork. With Staron®, such practicality never comes at the cost of creativity. Instead it becomes a chance to play with light, experiment with shape and be daringly original.



A soaring success

The towering, glass-classed Warsaw Spire is regarded around the world as a masterpiece in modern exterior design. The interior is no less impressive, thanks in part to a series of sculpted, geometric Quasar White Staron® counters throughout the building. While aesthetics were a clear priority, it was also the impressive durability of Staron® that led to its extensive use within this 21st century office space.

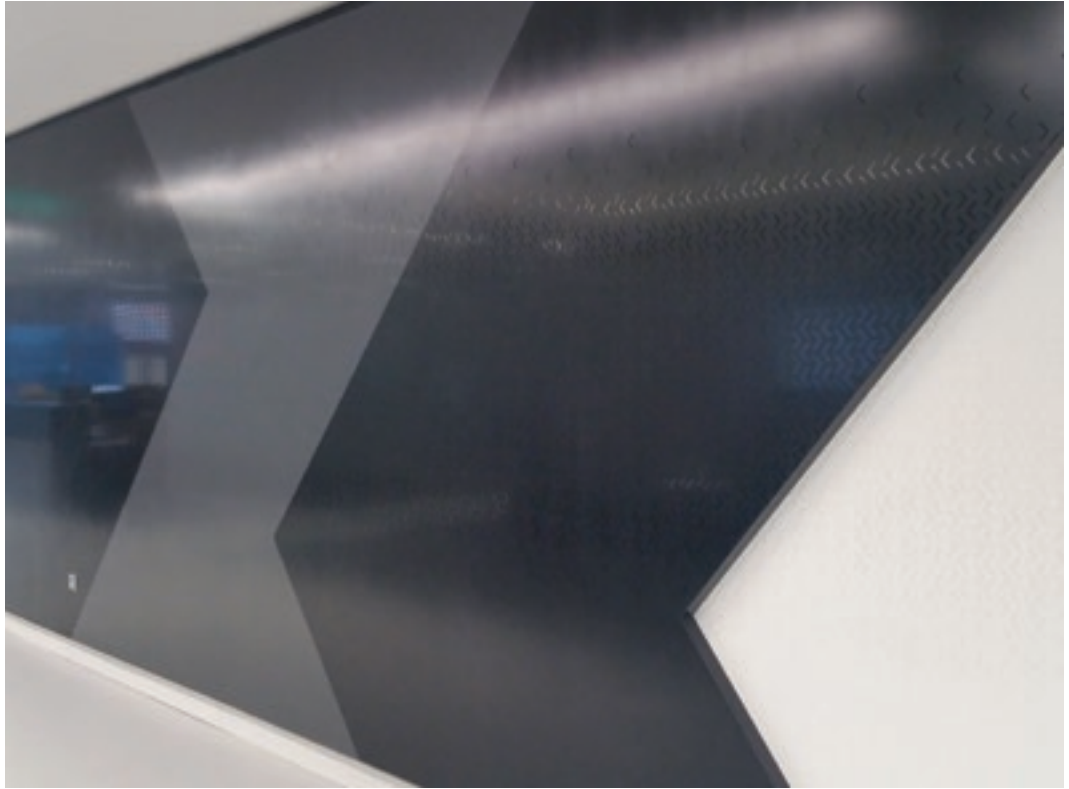
Warsaw Spire, Poland.
Concept: Massive Design, Construction: Krause, Photo: Tadeusz Parcej.



Building for the future

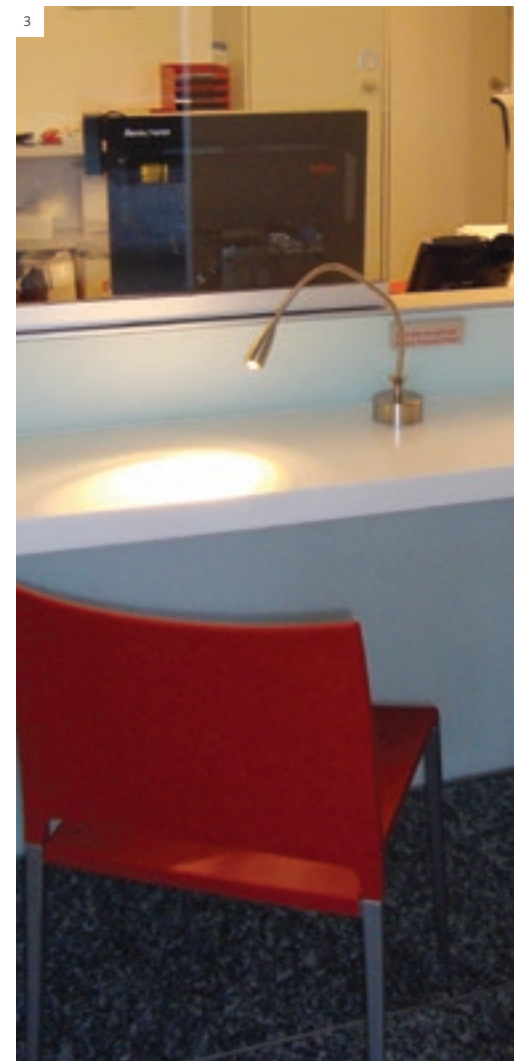
With the demand for sustainable products and healthy buildings ever rising, products that emit low chemical emissions are increasingly becoming a key consideration with architects. Staron® is Greenguard certified, making it an eco-friendly option for heavily trafficked public buildings such as universities.

ultima



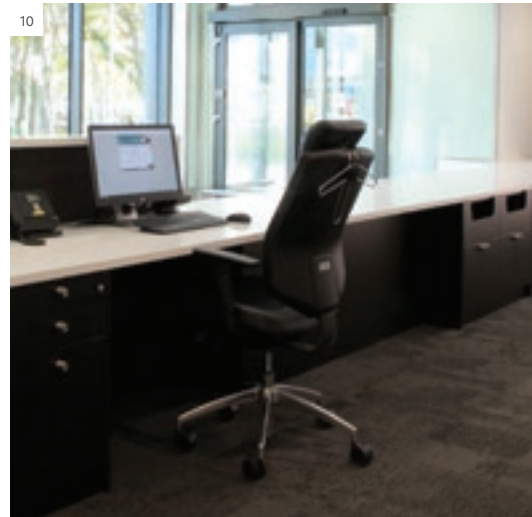
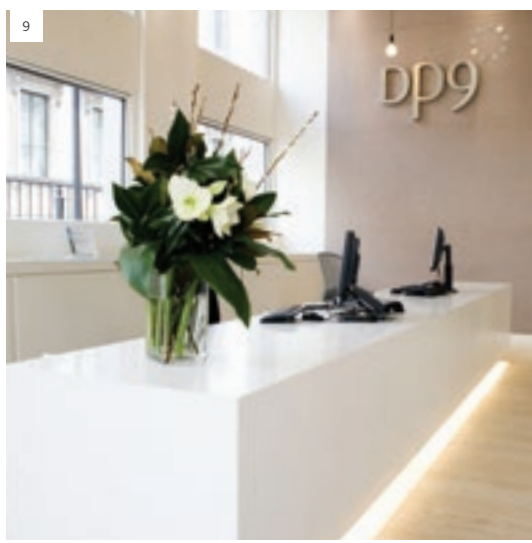
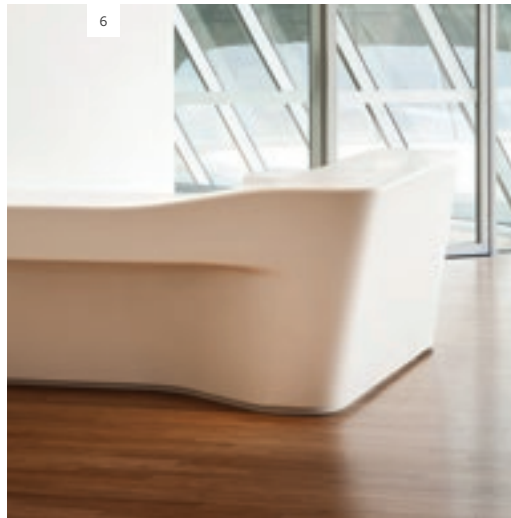
Guiding light

The headquarters of any company should be a place of pride, where branding is treated with reverence at every turn. With this in mind, leading IT partner Ultima used Staron® to create a seamless backlit feature wall constructed using a CNC-cut MDF frame clad in Bright White, Onyx and Steel Staron® sheets.



Spaces that work

Workstations and meeting areas are more than simply a place to plug in a laptop. It's where ideas are ignited, partnerships are forged and skills are shared. Creating the right setting is therefore essential. Staron® provides the perfect option for everything from desks to boardroom tables.



6 / Sky Lounge, Dongdaemun Design Plaza & Park. Architect: Zaha Hadid Architects.
7 / Blackheath, UK. 8 / Schaffhauser Kantonalbank, Switzerland. Realisation: Gehri AG, Aarberg.
9 / DP9 Office, UK. Design: dMFK Architects. 10 / Bristol Airport, UK. Reynolds Colclutt Furniture.





Birmingham Metropolitan Colleges, UK

As part of an extensive refurbishment scheme, Birmingham Metropolitan College libraries required a number of surfaces that could both accommodate internet access points and provide design flexibility. And while the finished solution would need to be long lasting, deadlines on the project were exceptionally short.

With precious little design time available, Staron® Bright White was recommended thanks to its strength, versatility and ready availability due to its popularity with contractors. The 12mm solid surface was used with a lime green high-pressure laminate to create the curved shapes the project demanded.

Deadlines were met with ease thanks to the immediate availability of Staron® Bright White, while the hardwearing, easily cleaned curved surfaces gave the college library a much-needed contemporary talking point. Internet access points were also cleverly included without compromising the overall design.



Healthcare

Whether in a hospital, surgery or treatment centre, all surface materials must meet stringent safety standards to prevent the spread of infection. With its non-porous, seamless and ultra-hygienic design, Staron® offers designers and facility managers the choice and flexibility they desire to create spaces that promote recovery and healing.



Setting the right tone

Creating an inviting reception is vital in any building, but in a healthcare setting it takes on greater importance still. It needs to comfort and nurture the second a patient arrives. Colour, shape and pattern all have a key role to play, which is why many Staron® finishes have been specifically designed with input from colour therapy specialists.



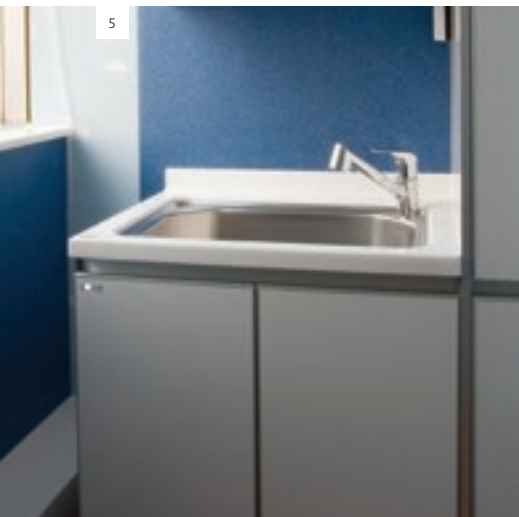
The healing power of design

The Starlight Children's Foundations mission is "To brighten the lives of seriously ill children and their families". Key to achieving this is creating environments that promote healing by being visually stimulating, yet stringently hygienic. A perfect example is the Foundation's Express Room, where Staron® wall cladding was used to help create an internal garden that brought the outside world inside to create a hub of fun and distraction.



Taking care of everyone

Few spaces need to work harder than examination rooms. For patients, they need to be a place of instant reassurance. For medical practitioners, practicality is key. While cleaners seek a solution that's easy to sterilise. Staron® provides an answer all parties will care for, thanks to its soothing hues and ultra-hygienic design.



Get well sooner

It's easy to overlook the integral role design plays in patient recovery. For example, calming colour schemes and flowing shapes are proven to lift spirits, which in turn aids rehabilitation. Of course, form must never compromise function. Fortunately, Staron® offers a non-porous solution that stops infection and helps kick-start recovery.



5



6



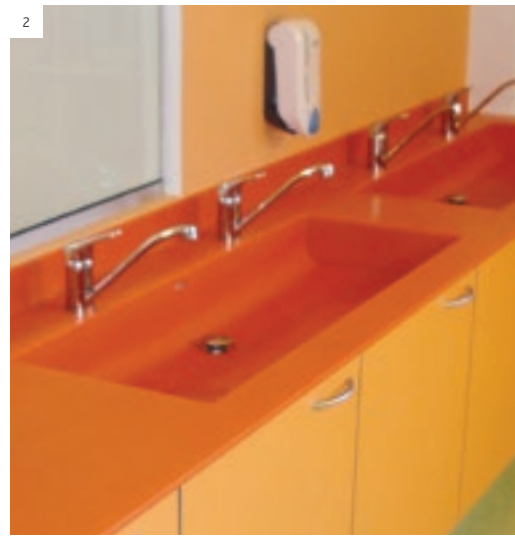
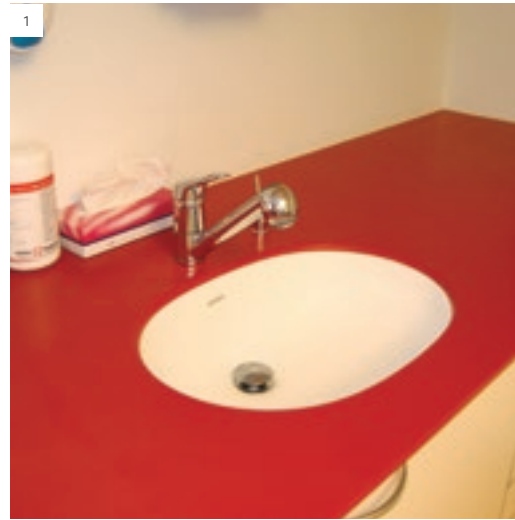
7

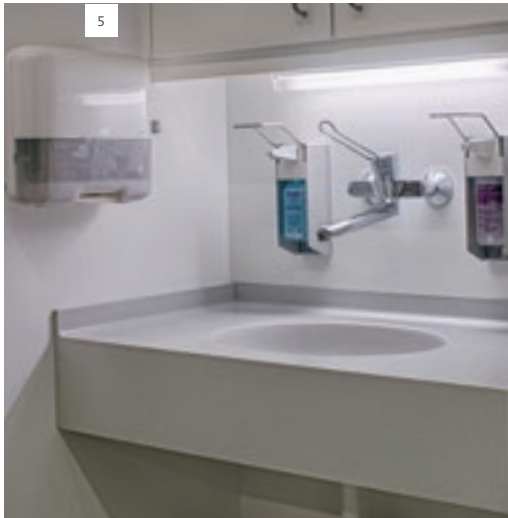


8



9





Awash with innovation

In a healthcare setting where the spread of bacteria can be life threatening, the humble sink takes on an altogether more important role. It needs to be effortless to sanitize, unaffected by moisture and provide an environment where no pathogen can propagate. Staron's non-porous, seamless design provides a perfect solution.





University of Queensland, Australia

Rather fittingly, very few environments are more testing on work surfaces than a laboratory. So when designing a new teaching facility within the University of Queensland's Great Court Complex, a hardwearing and versatile material was required that could withstand the rigours of daily experiments. The solution, was Staron®.

While chosen for its stain, chemical and heat-resistant qualities, the seamless and non-porous design of Staron® was also a key deciding factor, as the new facility would primarily be used as a wet laboratory. Such spaces require a high level of containment to ensure the safety of everyone inside, however those involved with the project were also keen to create a learning environment free of restriction. Challenge accepted.

Aspen Glacier Staron® surfaces were used for everything from desks and foot rests, to wall linings and custom-built sinks, providing the design flexibility and clinically sharp aesthetic required. The final result was a future-focussed, state-of-the-art teaching space where both students and teachers can excel daily.



Forever surprising

From the inventive seating in the concourse area to the intricately shaped entry system, the versatility of Staron® is beautifully showcased at every turn throughout this landmark building.

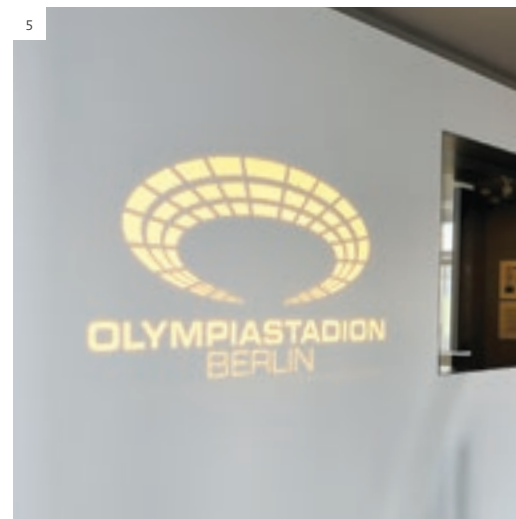
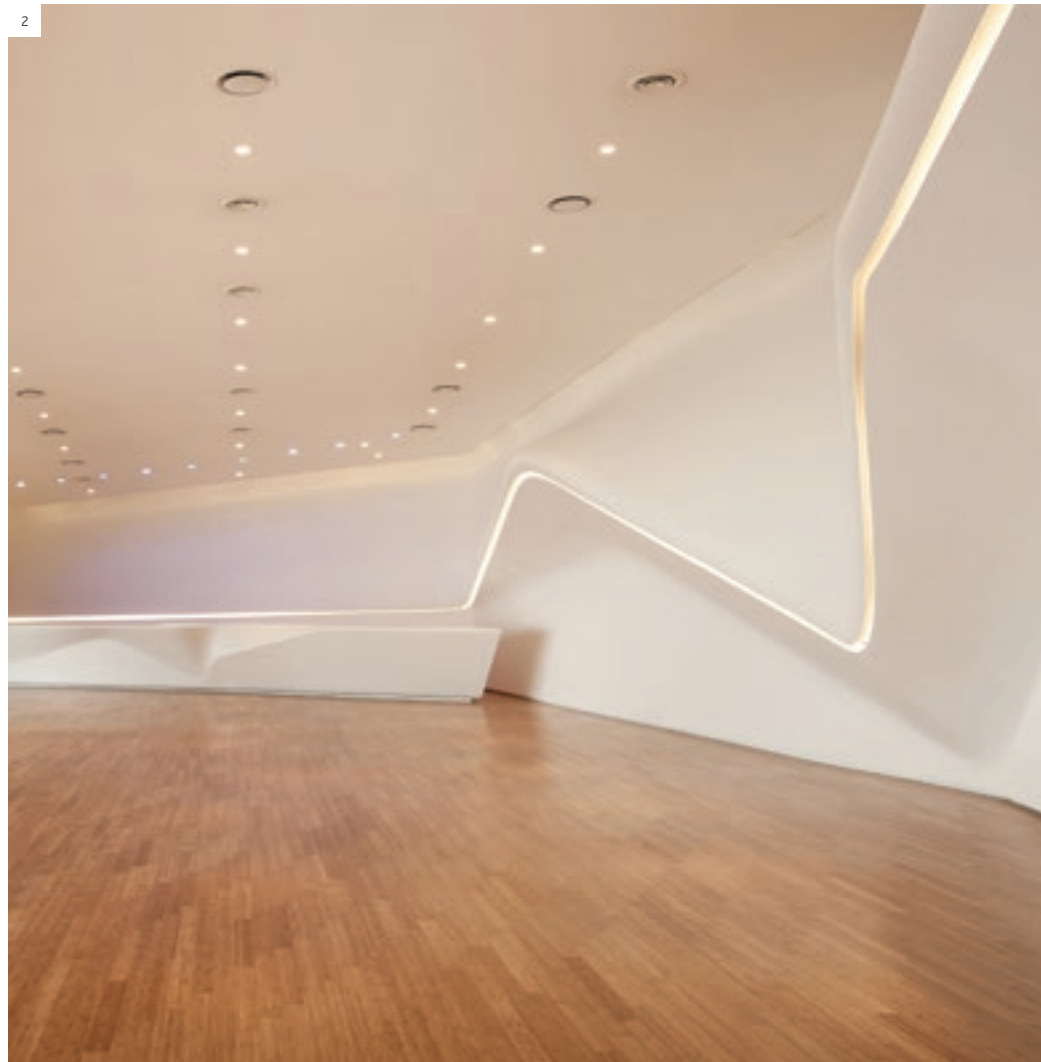
Public Spaces

In areas occupied by thousands daily, it's essential to use a surface material that's as durable as it is eye-catching, and as easy to repair as it is to personalise. Staron® more than meets the challenge, providing architects and designers with a highly versatile option that boasts impressive fire-retardant and bomb-blast safety credentials.



Higher standards

As the tallest building in the area, Vienna Twin Tower commands attention from afar. The interior is no less impressive, thanks to a sharply designed Staron® information desk finished with carved letter detail.



Wonderwalls

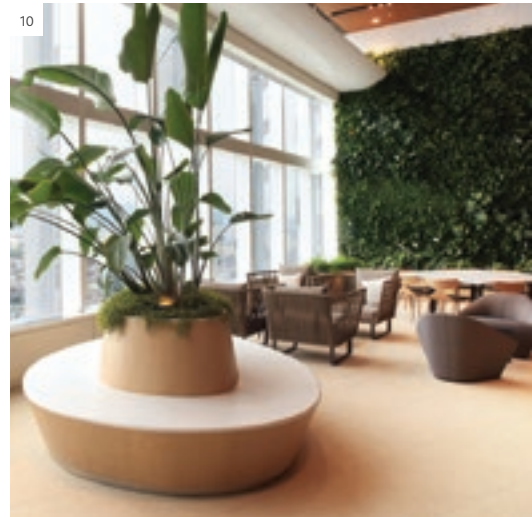
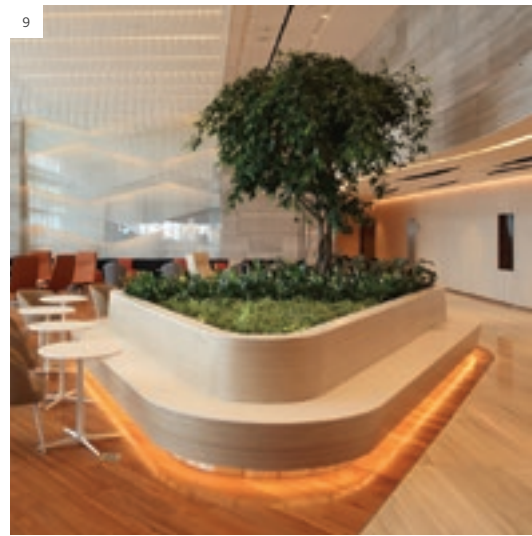
Thermoformed Staron® panels enable you to achieve a contemporary minimalist aesthetic with maximum ease. Inset lighting, long flowing curves and a seamless finish can all be achieved, resulting in an eye-catching finish where walls and ceilings effortlessly become one. Create eye-catching feature walls and draw attention to logos through the use of backlighting.

1 / Samsung Creativity Institute Chagio Gwan, South Korea.

2 / Sky Lounge, Dongdaemun Design Plaza & Park, South Korea. *Design: Zaha Hadid Architects.*

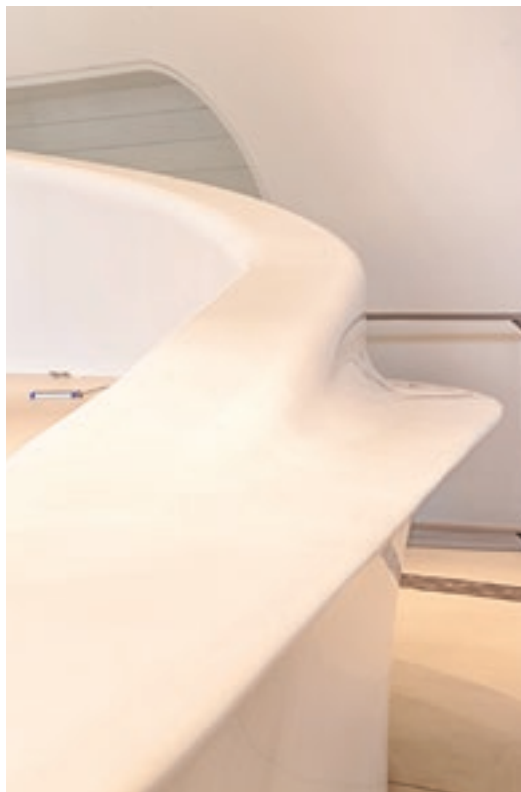
3 / Samsung Human Resource Development Institute, South Korea.

4 / Noon Square, South Korea. 5 / Berlin Olympic Stadium Visitor Centre, Germany. *Design: Akay von Oppen, Germany.*



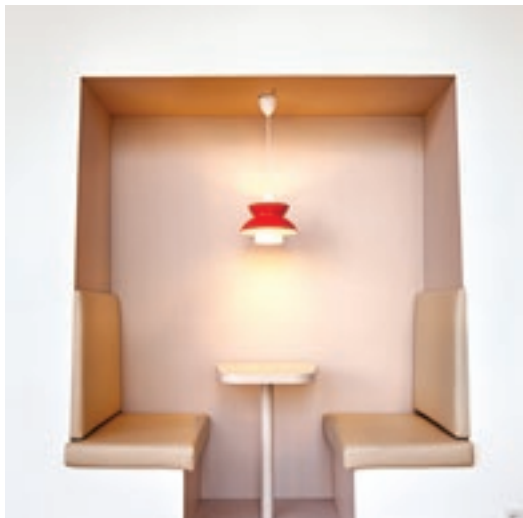
Making the functional fantastic

Whether a stadium or station, airport or lobby, public spaces have a responsibility to be both safe and environmentally sound. They need to be hardwearing too, able to withstand thousands of people passing through every day. Staron® provides a versatile option that can be carved, illuminated and thermoformed to crowd-pleasing effect.



Trusted to deliver

The creative freedom Staron® provides has long made it a go-to option for world-renowned architects. Such was the case when Zaha Hadid Architects designed the new Library and Learning Centre at the Vienna University of Economics, where it was used to create an information desk that forms a key focal point at the centre.



A new school of thought

In an age where encouraging students to learn has never been more challenging due to endless distractions from smartphones, clever design has a Milestone Vienna campus you'll find an array of creative communal areas and private learning spaces constructed from Staron® that let in natural light and create a warm, inviting and effective learning environment.

E





Bristol Airport, UK

Nearly nine million passengers pass through Bristol Airport every year – most with heavy luggage in hand. So when designing the airport's new Silverzone parking terminal desks, a practical solution was required that could both withstand a daily barrage of baggage blows and help speed up the checking in and out process.

Sanded Dover Staron® was selected for the large pick-up desk, resulting in a hardwearing, yet inviting piece of seamless design that immediately attracted the attention of passengers looking to collect or check in their vehicle. Another key reason the airport chose Staron® was the fact it can be polished to look like new at minimal cost, effectively ensuring the Silverzone parking terminal would always deliver a positive first, or last, impression.

Alongside the impressive desk, Staron® also appears at the airport in the form of a series of imposing signage totems that each resemble a block of ice. Chosen again because of its exceptional durability and waterproof design, the ice blocks quickly became a talking point with passengers.





Passenger peace of mind

Understandably, few buildings have more rigorous compliance requirements than an airport. When Heathrow Airport required a material for use across over 500 check-in desks, counters and security stations, Staron® more than met the challenge, offering a solution that ensured compliance with HAL Design Performance Standard for Airline Desks, ASIAD and the latest fire ratings.





Top flight

Evoking the feeling of a luxury hotel, the GVK Premium Class Lounge at Mumbai Airport provides passengers flying premium with a relaxing respite. Integral to the intricate design are a series of highly patterned privacy screens made from Bright White Staron® that allow light and air to flow freely into the lounge.



Enjoy the view

When on the 123rd floor of the world's sixth tallest skyscraper, the views outside naturally take priority. However, it could be argued the view inside South Korea's Lotte Tower is no less impressive. A series of translucent Staron® counters encircle the interior, providing a subtle source of light that contrasts beautifully with the panoramic sunsets visitors travel miles to enjoy.





A stroke of genius

While swimming pools are primarily a place for fun, fitness and improving wellbeing, they can also provide a hotbed for bacteria. Due to its seamless design, Staron® provides an exceptionally sterile material that can be easily washed down, making it an ideal choice for leisure areas. At the Blaubeuren indoor pool, Staron® has been used to clad over 40 metres of heated benches and create a modern lifeguard desk.





Smethwick Mosque, UK

Used by thousands of worshippers weekly, Smethwick's Jamia Masjid Anwar Ul Uloom Mosque required a number of new design installations that would further enhance this place of holy prayer. Primarily, this is comprised of a new foot washing room and an eye-catching fountain in the lobby area featuring glowing religious calligraphy.

Staron® was used for both projects thanks to its waterproof quality and ability to be easily thermoformed to create intricate shapes. The natural stone appearance of Staron® Genesis was chosen for the troughs, stools and walls in the washing room, which featured a highly decorative inlay in contrasting Staron® Aspen Sky.

The dramatic fountain provided the challenge of creating an entirely watertight construction that could also cleverly house a pump.





Due to both its strength and stain-resistance, the same Staron® surfaces were also used for additional interpretation tables located around the skeleton.

Natural History Museum, UK

When London's Natural History Museum had the opportunity to display the world's most complete Stegosaurus skeleton, no risks were taken. After all, this 900kg behemoth took 150 million years to find. A design solution was therefore required that would raise the installation above ground level to prevent accidental collisions, while also hide the supportive steel frame from view.

An outer plinth constructed from Staron® was created that beautifully complemented, and cleverly disguised, the complex steel frame. As the inner frame sat on bespoke shock-absorbent feet, it was also essential that the outer plinth have no contact with it at any point.

Inspired by the Wyoming heritage of the Stegosaurus, two shades of Staron® were used for the outer plinth layers – Staron® Sanded Tundra and Sanded Stratus. Each thermoformed layer was then precisely CNC cut and fabricated to create a flawless curved structure capable of withstanding 900kg of bones and metal.



Cleaning up

Kitchen necessity, or design talking point? With Staron®, the two quickly become one and the same. Sinks and bowls can be fully integrated into the solid surface, creating a free-flowing design that's also free of any unhygienic joints. Drainer grooves and complementary upstands complete the look in style.

Residential

Equally at home in both the kitchen and bathroom, Staron® provides a stylish and flexible option for residential projects of every size. With an extensive range of colours and finishes available, all tastes are easily accommodated. Staron® also provides an ideal choice for home furnishings, from bespoke bookcases to striking side tables.



All angles covered

Staron® was used to create a highly sculptural kitchen worktop that effortlessly links the property's living and dining areas. The worktop's clever floor lighting makes it appear as if somehow floating, while the many angled surfaces playfully use light to create a design that challenges and engages in equal measure.





Beachside Property, Australia

For many, the kitchen will always be the heart of the home. A place where you can unwind over wine and entertain in style. In the case of a beachside home in Australia, this integral space was also a place of learning thanks to an ingenious hidden study nook and tech zone in the centre of a striking, large scale kitchen island.

Constructed from Staron® Sanded Heron, the island cleverly conceals an impressive uprising within its centre, which is revealed at the touch of a button. When raised an additional cooking station and extra storage becomes immediately available, but with another touch the uprising gracefully disappears leaving a single seamless surface.

Staron® was the natural choice for such an ambitious design, as it could be wrapped around the window, bench tops and sidewalls of the carpentry to create a finish that both prevented bacteria forming and reflected light around the room to create an inviting and inspiring family space.





Above and beyond

Gone are the days where the kitchen was simply a place to prepare food, it's now the beating heart of the home where you relax with family and friends.

The designer has utilised Staron® to create a feature multi-level breakfast bar alongside seamless worktops, upstands and splashbacks. The versatility of Staron® means it can be used for all surface components. In this kitchen you can see seamless Staron® surfaced cabinet framing, window sills, floating shelves, concealed plugs, and even chopping boards!

Staron® Tempest Peak was selected for all these components, creating continuity and harmony within the design.



A proven recipe

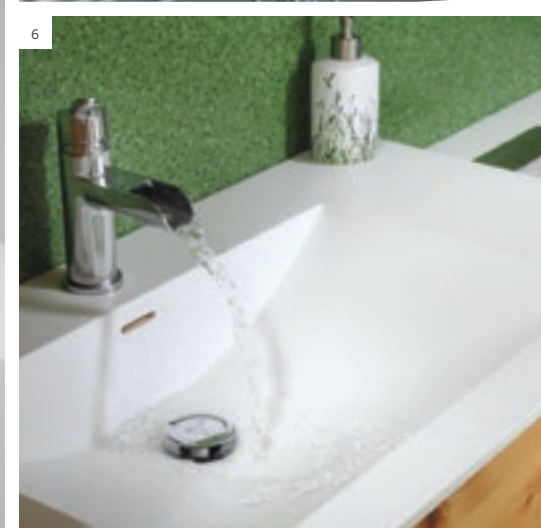
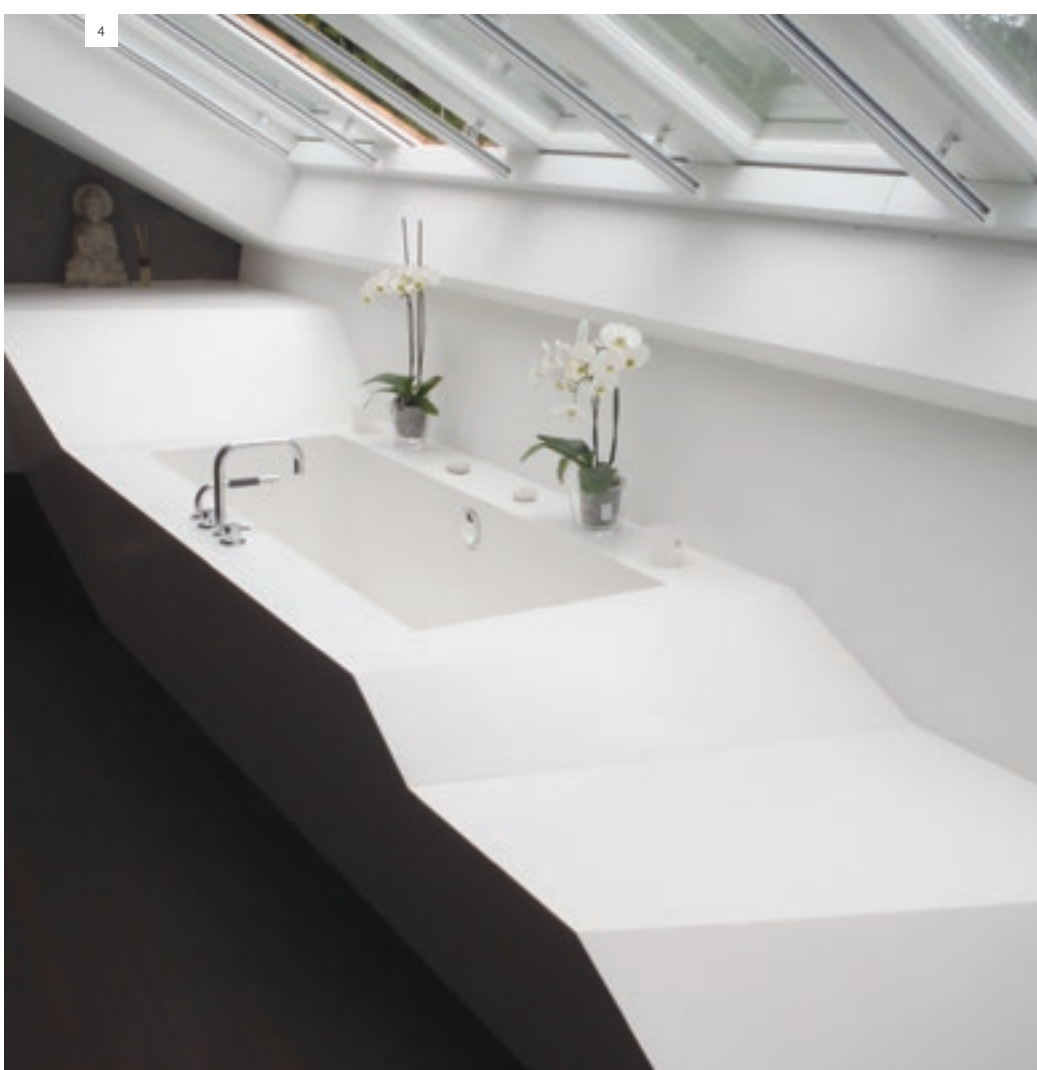
Whether an upstand or splashback, worktop, breakfast bar or island unit, Staron® kitchen surfaces provide a durable and safe option that can be shaped to your precise requirements.





Choice on tap

Single or double? Curved or straight? Grooved or grooveless? Whichever kitchen sink style you choose, Staron's non-porous, hygienic surfaces are always easy to clean and maintain.



Bathed in originality

While Staron® may be an obvious choice for any bathroom due to its 100% waterproof and seamless qualities, the way in which it can be shaped and thermoformed commonly results in designs that are anything but obvious.





Awash with ideas

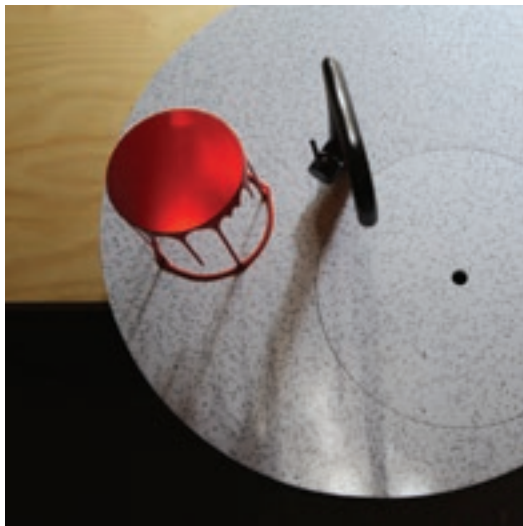
Increasingly, designers and architects are embracing different tones and finishes that complement their ever more inventive and original bathroom designs. In the case of this private washroom, Staron® Cloudbank was used to create a concrete-effect on the two sunken, angular basins that strikingly contrasted with the dark brown floor tiles used throughout.



A winning combination

Staron's ability to integrate with other materials is just one of the many reasons leading designers are increasingly using it to bring unique design visions to life. A perfect example is the Motif Basin created by Thomas Coward, which was awarded a Staron® Design Award in recognition of the way it strikingly combines a piece of beautifully hand-etched glass with a seamless Staron® surrounding.

Motif Basin Concept.
Design: Thomas Coward for Omvivo, Australia.



Raising the bar

A second example of award-winning Staron® design is Eliza Rudkin's iCONiCal Kitchen Bar. The brief was simple – create an elegant kitchen that maximises storage while challenging design convention. Eliza's winning solution featured a thermoformed circular conical bar created from Staron®. The monolithic bar also incorporated an undermounted sink, hidden from sight thanks to a matching Staron® cover.



Availability
and Technical
Information

staron[®]
Solid Surfaces

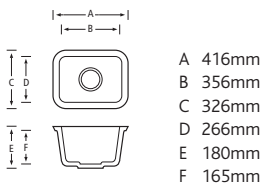
Staron® Solid Surface Sinks

The solid surface sinks and bowls fully integrate and have no open joints or seams when installed into Staron® solid surfaces. This means you have a completely hygienic and easy to maintain surface and sink which flow together for a sensational look.



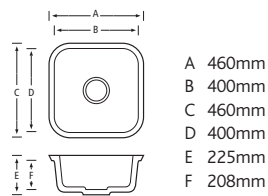
A1121

Bright White



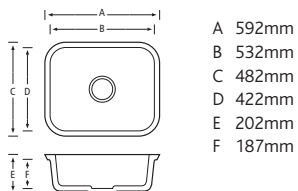
A1181

Bright White



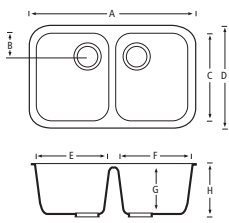
A1231

Bright White





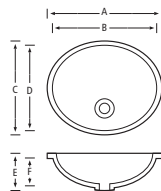
A2311
Bright White



- A 794mm
- B 110mm
- C 421mm
- D 481mm
- E 348mm
- F 348mm
- G 235mm
- H 250mm



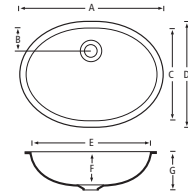
A3181
Bright White



- A 462mm
- B 422mm
- C 376mm
- D 336mm
- E 156mm
- F 139mm



A3211
Bright White



- A 548mm
- B 86mm
- C 356mm
- D 396mm
- E 508mm
- F 156mm
- G 173mm

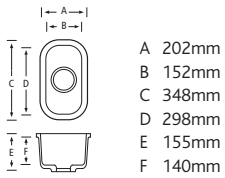
Solid Surface Sinks

These solid surface sinks complement the complete Staron® solid surface range when seamlessly jointed with your choice of Staron® surface.



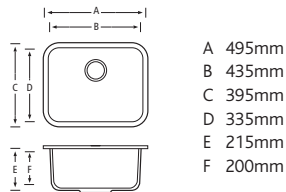
A0002

Bright White



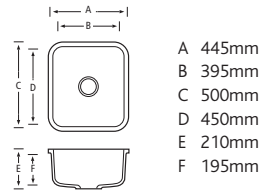
A0001

Bright White



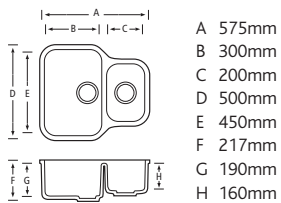
A0003

Bright White



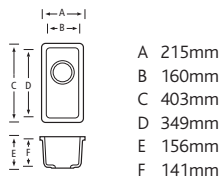
A0004

Bright White

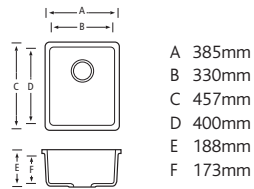




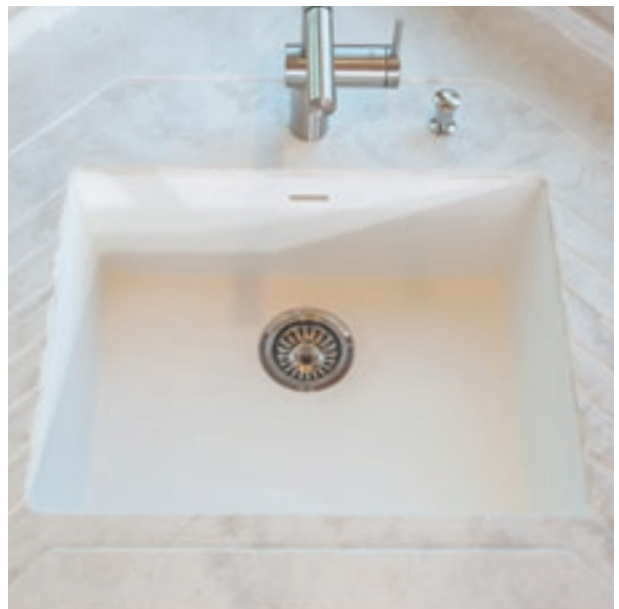
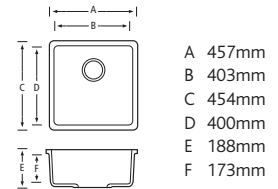
A0005
Bright White



A0006
Bright White



A0007
Bright White



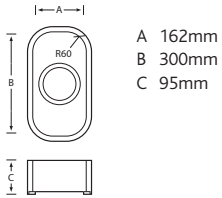
Staron® Solid Surface Sinks with Stainless Steel Bases

Staron® sinks and bowls can be produced with a hard-wearing and heat tolerant stainless steel base using all of the Staron® décors shown in this brochure.



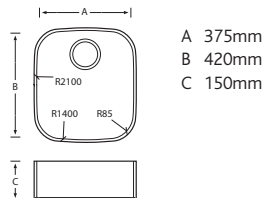
CTK0162

Base Options:
Colour Matched / Stainless Steel



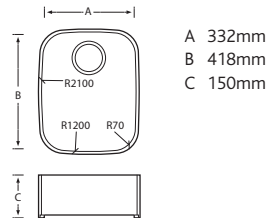
CTK0375

Base Options:
Colour Matched / Stainless Steel



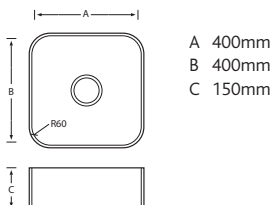
CTK0332

Base Options:
Colour Matched / Stainless Steel



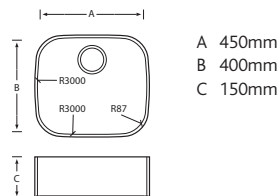
CTK0400

Base Options:
Colour Matched / Stainless Steel



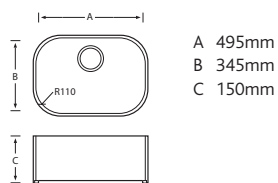
CTK0450

Base Options:
Colour Matched / Stainless Steel



CTK0495

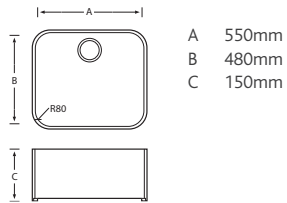
Base Options:
Colour Matched / Stainless Steel





CTK0550

Base Options:
Colour Matched / Stainless Steel



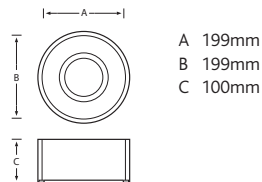
Specially ordered sinks and bowls

Staron® sinks and bowls can also be formed using any of the Staron® décors available in the UK and Ireland. These specially ordered sinks can either colour match or contrast with the surrounding Staron® surfaces into which they are being seamlessly installed.



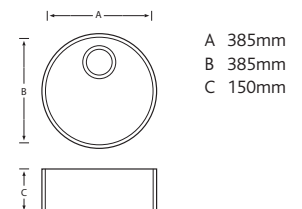
TK0199

Base Options:
Colour Matched / Stainless Steel



TK0385

Base Options:
Colour Matched / Stainless Steel



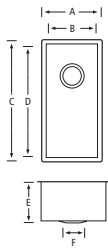
Stainless Steel Undermount Sinks

The high grade 18/10 stainless steel of these undermount sinks ensure a quality finish and long term corrosion resistance.



Aire 0.5 Bowl

Stainless Steel Undermount Sink

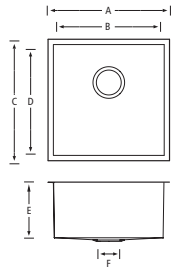


A 210mm
B 180mm
C 430mm
D 400mm
E 140mm
F 90mm



Ure 1.0 Bowl

Stainless Steel Undermount Sink

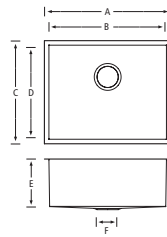


A 430mm
B 400mm
C 430mm
D 400mm
E 200mm
F 90mm



Dee 1.0 Bowl

Stainless Steel Undermount Sink

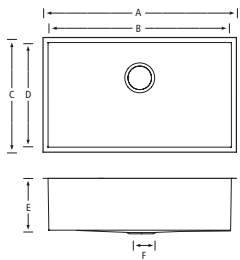


A 530mm
B 500mm
C 430mm
D 400mm
E 200mm
F 90mm



Tay 1.0 Bowl

Stainless Steel Undermount Sink

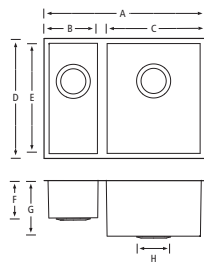


A 730mm
B 700mm
C 430mm
D 400mm
E 200mm
F 90mm



Bann 1.5 Bowl

Stainless Steel Undermount Sink

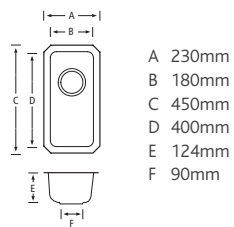


A 580mm
B 180mm
C 340mm
D 430mm
E 400mm
F 140mm
G 200mm
H 90mm



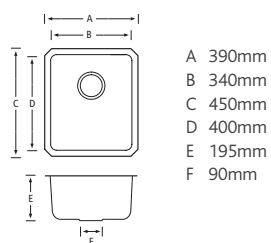
Esk 0.5 Bowl

Stainless Steel Undermount Sink



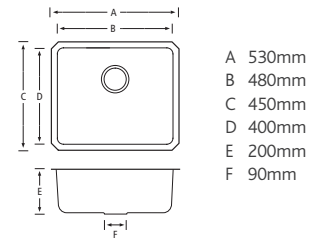
Weaver 1.0 Bowl

Stainless Steel Undermount Sink



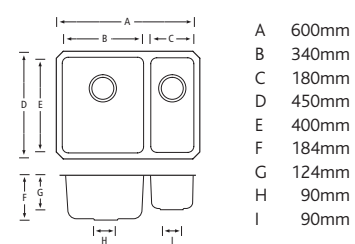
Twiss 1.0 Bowl

Stainless Steel Undermount Sink



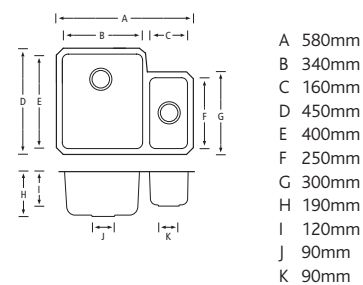
Brett 1.5 Bowl

Stainless Steel Undermount Sink



Colne 1.5 Bowl

Stainless Steel Undermount Sink



Creative Versatility

Staron® decorative sheets, bowls and sinks enable designers and architects to bring their ideas to life free of complication and constriction. For further information regarding the technical processes and design benefits listed below simply visit staron.com.

Seamless design

With the use of specialist adhesives, panels of Staron® can be bonded together so that the molecules of each panel edge combine to form a truly seamless joint. This capability enables the creation of aesthetically pleasing shapes that appear to have been carved from one single piece of material. It also provides practical advantages as noted in the Practical Functionality section.

Surface finishes

Three Staron® finishes are available – Matt, Satin and Gloss. Matt is recommended for surfaces subject to prolonged use or harsh environments. Satin provides a high lustre and requires slightly more maintenance. Gloss offers a highly reflective finish and requires the most care. For this reason, gloss finish is recommended primarily for low traffic areas, wall panelling and lighter colour décors. Lighter colour décors do not highlight scuffs and scratches as much as dark colours.

Pearl particulate designs

Some Staron® décors have highly reflective pearl particulates suspended within the material which reflect light in a fascinating way. As the object is viewed from different angles or if the light source is moving, the pearl particulates will change the way they reflect the light.

Solid core

Unlike some decorative materials, Staron® offers solid colour and patterning across its surface and right through to its core. This ensures all machined areas will flawlessly and consistently showcase the surface design.

Cutting and shaping

Staron® can be machined using woodworking tools into any shape and edge profile, making it ideal for bespoke furniture designs, seamless cladding and even fine art sculptures.

Thermoforming

This highly specialist curved shaping technique involves Staron® material being placed into a specially designed oven and heated to a temperature between 145°C and 175°C. The acuteness of the formed radii depends on material thickness and décor (the Tempest® range is not recommended for thermoforming with acute radii). Thermoforming provides the designer opportunities to create truly unique shapes for both aesthetic and practical solutions.

Inlaying

Contrasting Staron® colours can be flawlessly bonded together through the process of inlaying to create a striking finish.

Engraving

Lettering and logos can be engraved into Staron's surface to add greater standout. This can be further enhanced through the use of backlighting.

Backlighting

Some Staron® décors have light transmittance properties that allow a light source on one side of a sheet to be seen on the other side. The level of light transmittance is affected by thickness and décor selection. Engraving can be used to enhance the visual impact of backlighting.

Sublimation

This high temperature printing technique involves the use of specialist machinery to press special dyes into the Staron® surface. Unlike other printing methods, the resulting design is embedded into the Staron® surface and therefore retains its colour and can be sanded or polished as required.

The techniques of inlaying, engraving, backlighting and sublimation are all ideal for corporate branding.

Practical Functionality

Staron® decorative sheets, bowls and sinks provide a host of practical features that provide long-term value and safety. For further information regarding the functional characteristics and benefits listed below simply visit staron.com.

Safe material

Staron® is chemically inert and so is completely safe in all applications. For example, it is perfect for use as a work surface and the preparation of food. It is also perfect as a laboratory work surface, because its inert chemical status means Staron® does not interfere with any chemical test a laboratory is carrying out.

100% waterproof

Staron® is completely non-porous. The benefits of this characteristic are numerous. Because it is waterproof, Staron® will not absorb moisture. This means with a simple cleaning regime, bacteria is not able to develop on its surface, making Staron® one of the most hygienic decorative surfaces available. It also means Staron® is perfect for use in all areas, including wet rooms, without any fear of material degradation.

Seamless design

As noted in the Creative Versatility section, with the use of specialist adhesives, panels of Staron® can be bonded together so that the molecules of each panel edge combine to form a truly seamless joint. This characteristic means that joint gaps, in which bacteria can develop, are eliminated.

Fire-retardant

All Staron® solid white décors have achieved a Euro class B certification. All other Staron® décors have achieved a Euro class C rating.

Long-term durability

Staron® has significant strength and durability. For example, it has been successfully bomb-blast tested and is classed as compliant with the stringent requirements of the UK's Department for Transport ASIAD document for wall panelling systems used in UK airports.

Maintenance, repairs and the environment

Staron® is very easy to clean and maintain. Please refer to the 'How to care for your solid surfaces' leaflet for more details of day to day cleaning, maintenance advice and warranty details.

In the unlikely event a Staron® surface suffers serious impact, any damaged areas can be restored to their original condition by a trained fabricator. This repairable characteristic of Staron® is environmentally very beneficial. Most other decorative surfaces have to be scrapped when they have been damaged, leading to costly and wasteful replacements. But a well-designed Staron® installation can be maintained for decades, leading to fantastic whole life cost savings.

Several Staron® décors have SCS material content certification which verifies that Staron® is working responsibly to minimise any environmental impact during its manufacturing process by using recycled materials.

Certification



Staron® 10 Year Warranty

Each Staron® installation will have a limited warranty, provided the conditions noted on the Staron® website (staron.com) are met.

Performance Properties

Staron® Solid Surface
Solid, Sanded, Aspen, Pebble,
Quarry, Metallic, Supreme™

Staron® Solid Surface
Tempest®

Properties	Typical Results	Typical Results
Tensile strength	6,000 psi	3,500 psi
Tensile modulus	600,000 psi	786,000 psi
Flexural strength	10,000 psi	6,500 psi
Flexural modulus	1,000,000 psi	950,000 psi
Elongation	0.50%	0.50%
Hardness	92 Rockwell 'M' Scale 65 Barcol Impressor	88 Rockwell 'M' Scale 54 Barcol Impressor
Thermal expansion	2.0 x 10 ⁻⁵ in/in F°	2.3 x 10 ⁻⁵ in/in F° 3.6 x 10 ⁻⁵ m/m °C
Gloss (60 Gardner)	Between 5 - 20	Between 10 - 75
Color stability	No change-200hrs	Pass
Stain resistance	Pass Rating 41	Pass
Abrasion resistance	Pass	-
Cleanability and wear	-	Pass
Boiling water surface resistance	No effect	No effect
High temperature resistance	No effect	No effect
IZOD Impact resistance (notched)	0.28 ft.lbf/in	0.28 ft.lbf/in
Ball drop 1/2" (12.3 mm) sheet	144" w/ 1/2 lb ball, No failure	1/2 lb ball No failure, 93+
Fungi and Bacterial resistance	No growth	No growth
Specific gravity	Solid colors 1.72 Pattereded colors 1.69	1.6
Water absorption	0.04%, (1/2", 24hrs) 0.11%, (1/8", 24hrs)	0.04%, (1/2", 24hrs)
Flammability	Class A / Class 1	Class A / Class 1
Flame spread	10	-
Smoke density	10	-
Radiant heat resistance	No visual effect	
Toxicity	84.4g (Solid Color) 81.8g (Patterned Color)	- -
Food Equipment Materials	Approved	Approved

Chemical Resistance

We conducted chemical tests on various typical contaminations. These contaminants were dropped onto the surface and covered with glass plates for 16 hours. The Staron® Solid Surface was then scrubbed with damp pads and detergent and then tested for the results. Most pollutants can easily be removed from the surface with a damp pad with a neutral detergent.

The residue from the following chemical reagents can be removed with a wet Scotch-Brite® pad and bleaching cleanser.

- Acetic acid (10%)
- Acetone
- Ammonia
- Ammonium hydroxide (5,28%)
- Amyl acetate
- Amyl alcohol
- B-4 body conditioner
- Ball point pen
- Benzene
- Bleach (household type)
- Blood
- Butyl alcohol
- Calcium thiocyanate (78%)
- Carbon disulfide
- Carbon tetrachloride
- Cigarette (nicotine and tar)
- Citric acid (10%)
- Coffee
- Cooking oils
- Cottonseed oil
- Crystal Violet (Biochemical colorants)
- Cupra ammonia
- Dishwashing liquid/powders
- Ethanol
- Ethyl acetate
- Ethyl ether
- Formaldehyde
- Gasoline
- Gentic violet
- Grape juice
- Hair dyes
- Household soaps
- Hydrochloric acid (20,30,37%)
- Hydrogen peroxide
- Iodine (1%)
- Ketchup
- Lemon juice
- Lipstick
- Mercurochrome (2%)
- Methanol
- Methyl ethyl ketone
- Methyl orange (1%)
- Methyl red (1%)
- Methylene Blue (Biochemical colorants)
- Mineral oil
- Mustard
- N-hexane
- Nail polish
- Naphthalene
- Olive oil
- Pencil lead
- Perchloric acid
- Permanent marker pen
- Potassium hydroxide solution (5, 10, 25, 40%)
- Povidon-iodine(PVP-I) 'Betadine' solution
- Shoe polish
- Soapless detergents
- Sodium bisulfate
- Sodium hydroxide solution (5,10,25,40%)
- Sodium sulfate
- Soy sauce
- Sugar (sucrose)
- Sulfuric acid (25,33,60%)
- Tea
- Tetrahydrofuran
- Toluene
- Tomato juice
- Urea (6%)
- Uric acid
- Vinegar
- Washable inks
- Wine
- Xylene
- Zinc Chloride

Note: A Biochemical colorant is a dyeing material. It may leave a stain on Staron® instantly.

When Staron® is exposed to a biochemical colorant, please remove it within a few minutes with acetone.

The following chemical reagents may cause damage that requires sanding for complete removal. Frequent and/or prolonged exposure to these reagents should be avoided.

- 3M Avagard™ D
- Acetic acid (90,98%)
- Acid drain cleansers
- Acridine Orange (Biochemical colorants)
- Chlorobenzene
- Chloroform (100%)
- Chromic trioxide acid
- Cresol
- Dioxane
- Equalizing mix (50/50)
- Ethyl acetate
- Film developer
- Formic acid (50,90%)
- Furfural
- Giemsa (Biochemical colorants)
- Glacial acetic acid
- Hydrofluoric acid (48%)
- Luralite mix (50/50)
- Methylene chloride based products such as paint removers, brush cleansers and some metal cleansers
- Nitric acid (25,30,70%)
- Phenol (40,85%)
- Phosphoric acid (75,90%)
- Safranin (Biochemical colorants)
- Sulfuric acid (77,96%)
- Trichloroacetic acid (10,50%)

The information contained herein is provided by Lotte Chemical Co., Ltd. and its subsidiaries and affiliates (collectively referred to as "Lotte Chemical Co., Ltd.") for information purposes only and should be used by individuals with technical experience and knowledge in the area. Lotte Chemical Co., Ltd. does not make any representation or warranties of the usefulness or expected result of the information, and does not assume any responsibility whatsoever related to the use of the information. Exclusion of the implied warranties may not apply in certain jurisdictions.

Copyright Lotte Chemical Co., Ltd. All rights reserved.

Staron® Availability

Staron® Colour		Sheet Sizes			Certifications		Translucency
		6mm 2500mm x 760mm	12mm 3680mm x 760mm	12mm 1840mm x 760mm	SCS	Euro FR Class	
SOLID							
Solid Bright White	BW 010	●	●	●	●	B	
Solid Fog	SF 020	-	●	●	-	C	
Solid Natural	SV 041	-	●	●	-	C	
Solid Pearl	SP 011	●	●	●	-	C	
Solid Pure White	SP 016	-	●	●	-	B	
Solid Quasar White	SQ 019	●	●	●	●	B	
SUPER SOLID							
Super Solid Bliss	SB 022	-	●	●	-	C	
Super Solid California Poppy	SC 052	-	●	●	-	C	
Super Solid Dazzling White	SD 001	-	●	●	-	B	●
Super Solid Oasis	SO 064	-	●	●	-	C	
Super Solid Onyx	ON 095	●	●	●	-	C	
Super Solid Steel	ST 023	-	●	●	-	C	
Super Solid Sunflower	SS 042	-	●	●	●	C	
Super Solid Univers	SU 053	-	●	●	-	C	
SANDED							
Sanded Birch	SB 412	-	●	●	-	C	
Sanded Clay	SC 475	-	●	●	-	C	
Sanded Cornmeal	SC 433	-	●	●	-	C	
Sanded Cream	SM 421	-	●	●	-	C	
Sanded Dark Nebula	DN 421	-	●	●	-	C	
Sanded Dover	SD 413	-	●	●	-	C	
Sanded Goose	SG 428	-	●	●	-	C	
Sanded Grey	SG 420	-	●	●	-	C	
Sanded Heron	SH 428	-	●	●	●	C	
Sanded Icicle	SI 414	-	●	●	-	C	
Sanded Meadow	SM 465	-	●	●	-	C	
Sanded Mocha	SM 453	-	●	●	-	C	
Sanded Onyx	SO 423	●	●	●	-	C	
Sanded Sahara	SS 440	-	●	●	-	C	
Sanded Stratus	SS 418	-	●	●	-	C	
Sanded Taupe	ST 486	-	●	●	-	C	
Sanded Tundra	ST 482	-	●	●	-	C	
Sanded Vermillion	SV 430	-	●	●	-	C	
ASPEN							
Aspen Alder	AA 625	-	●	●	●	C	
Aspen Brown	AB 632	-	●	●	-	C	
Aspen Cliff	AC 652	-	●	●	●	C	
Aspen Concrete	AC 629	-	●	●	-	C	
Aspen Glacier	AG 612	●	●	●	-	C	
Aspen Glow	AG 636	-	●	●	-	C	
Aspen Lily	AL 645	-	●	●	●	C	
Aspen Pepper	AP 640	-	●	●	●	C	
Aspen Pond	AP 665	-	●	●	-	C	
Aspen Snow	AS 610	-	●	●	-	C	
EARTHEN							
Earthen Bark	QL 257	-	●	●	-	C	
Earthen Stratum	QL 287	-	●	●	-	C	

Staron® Colour		Sheet Sizes			Certifications		Translucency
		6mm 2500mm x 760mm	12mm 3680mm x 760mm	12mm 1840mm x 760mm	SCS	Euro FR Class	
PEBBLE							
Pebble Blue	PB 870	-	●	●	-	C	
Pebble Boulder	PB 852	-	●	●	-	C	
Pebble Collina Mirage	PM 879	-	●	●	-	C	
Pebble Ebony	PE 814	-	●	●	●	C	
Pebble Gold	PG 840	-	●	●	-	C	
Pebble Grey	PG 810	-	●	●	-	C	
Pebble Ice	PI 811	-	●	●	-	C	
Pebble Saratoga	PS 820	-	●	●	-	C	
Pebble Swan	PS 813	-	●	●	-	C	
Pebble Tea Rose	PT 845	-	●	●	-	C	
Pebble Terrain	PT 857	-	●	●	-	C	
METALLIC							
Metallic Galaxy	EG 595	-	●	●	-	C	
Metallic Yukon	EY 510	-	●	●	-	C	
QUARRY							
Quarry Oyster	TO 310	-	●	●	-	C	
Quarry Starred (NEW)	QS 288	-	●	●	-	C	
Quarry Terrazzo Venezia	NT 150	-	●	●	-	C	
Quarry Terrazzo Bologna	NT 970	-	●	●	-	C	
Quarry Terrazzo Torino	NT 981	-	●	●	-	C	
SUPREME™							
Supreme Ash Concrete	VA 129	-	●	●	-	C	
Supreme Arctic White	VA 311	-	●	●	-	C	
Supreme Beige Granite	VB 172	-	●	●	-	C	
Supreme Cloudbank	VC 118	-	●	●	-	C	
Supreme Cotton White	VC 110	-	●	●	-	C	●
Supreme Dandelion	VD 175	-	●	●	-	C	
Supreme Dawn	VD 126	-	●	●	-	C	
Supreme Delphi	VD 111	-	●	●	-	C	●
Supreme Magnolia	VM 143	-	●	●	-	C	
Supreme Morning Sky	VM 114	-	●	●	-	C	●
Supreme Natural Bridge	VN 144	-	●	●	-	C	
Supreme Ocean View	VO 171	-	●	●	-	C	●
Supreme Rotor Cloud	VR 322	-	●	●	-	C	
Supreme Urban Grey	VU 127	-	●	●	-	C	
TEMPEST®							
Tempest Bamboo	FB 173	-	●	●	-	C	
Tempest Bronzestar	FB 154	-	●	●	-	C	
Tempest Caviar	FC 188	-	●	●	-	C	
Tempest Genesis	FG 174	-	●	●	-	C	
Tempest Glimmer	FG 144	-	●	●	-	C	
Tempest Horizon	FH 114	-	●	●	●	C	
Tempest Igneous	FI 187	-	●	●	-	C	
Tempest Meteor	FM 111	-	●	●	-	C	
Tempest Mystic	FM 178	-	●	●	-	C	
Tempest Peak	FP 100	-	●	●	-	C	
Tempest Radiance (Shimmer)	FR 148	-	●	●	-	C	
Tempest Whippoorwill	FW 145	-	●	●	-	C	
Tempest Zenith	FZ 184	-	●	●	-	C	

Staron® Solid



SP 016
SOLID
Pure White

B



SQ 019
SOLID
Quasar White

B



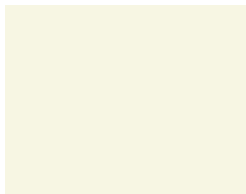
BW 010
SOLID
Bright White

B



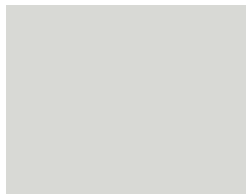
SP 011
SOLID
Pearl

C



SV 041
SOLID
Natural

C



SF 020
SOLID
Fog

C

Staron® Super Solid



SD 001 (TRANSLUCENT)
SUPER SOLID
Dazzling White

B



SO 064
SUPER SOLID
Oasis

◆ C



SS 042
SUPER SOLID
Sunflower

◆ C SCS



SC 052
SUPER SOLID
California Poppy

◆ C



SU 053
SUPER SOLID
Univers

◆ C



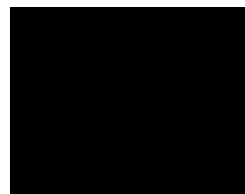
SB 022
SUPER SOLID
Bliss

◆ C



ST 023
SUPER SOLID
Steel

◆ C



ON 095
SUPER SOLID
Onyx

◆ C

Whilst every effort has been made to accurately represent the décors within this brochure, we are unable to guarantee an exact match due to the limitations of the printing process. Please view actual sample prior to selection. Before you install your Staron® surface, please verify that batch numbers are the same to ensure a complete colour match.

Staron® Sanded



SI 414
SANDED
Icicle



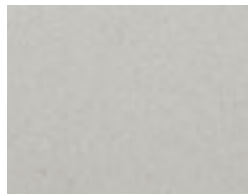
SD 413
SANDED
Dover



SM 421
SANDED
Cream



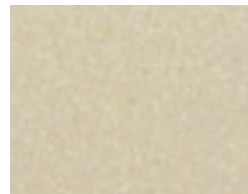
SB 412
SANDED
Birch



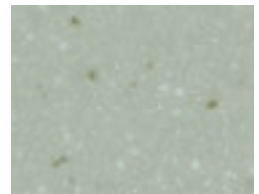
SS 418
SANDED
Stratus



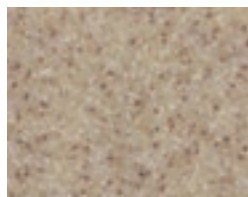
SS 440
SANDED
Sahara



SC 433
SANDED
Cornmeal



SM 465
SANDED
Meadow



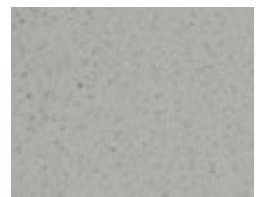
SV 430
SANDED
Vermillion



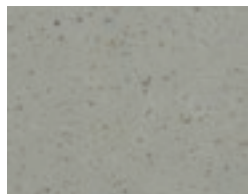
SM 453
SANDED
Mocha



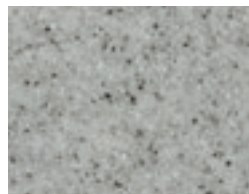
SC 475
SANDED
Clay



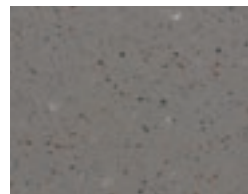
SG 428
SANDED
Goose



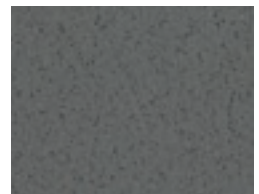
SH 428
SANDED
Heron



SG 420
SANDED
Grey



ST 482
SANDED
Tundra



ST 486
SANDED
Taupe



DN 421
SANDED
Dark Nebula



SO 423
SANDED
Onyx



- ❖ Dark colours and high gloss finishes - Staron® is a durable and repairable surface that will last for many years with simple care. Please refer to our 'How to Care for your Solid Surfaces' leaflet. Dark colours and high gloss finishes will, like everything else, potentially show scratches if a worktop saver has not been used. Scratches or abrasion marks are not covered under the Staron® 10 year warranty. However, if scratches occur over a period of time, the surface can be re-sanded and re-finished, which will remove the scratches. Refinishing your surface must be performed by an authorised Staron® fabricator / installer and you will be charged at an hourly service rate.
- ❖ Contains pearl particulates that are shaped flat and tend to float on the surface. Due to the unique distribution in production, these particulates come with directional pattern. As a result, reflections in particulates may vary depending on light and view angles.

SCS These colours hold the SCS Material Content Certification which verifies that Staron® is working responsibly to minimise environmental impact during its manufacturing process.

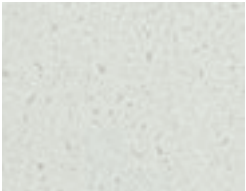
B European FR 'Class B' Certification.

C European FR 'Class C' Certification.

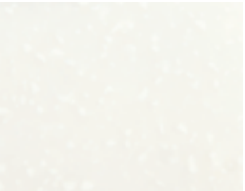
Staron[®] Aspen



AS 610
ASPEN
Snow c



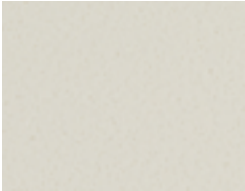
AA 625
ASPEN
Alder c | scs



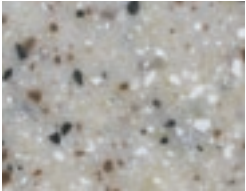
AG 612
ASPEN
Glacier c



AG 636
ASPEN
Glow c



AL 645
ASPEN
Lily c | scs



AP 640
ASPEN
Pepper c | scs



AC 652
ASPEN
Cliff c | scs



AB 632
ASPEN
Brown c | scs



AC 629
ASPEN
Concrete ❖ c



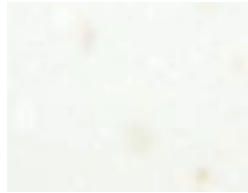
AP 665
ASPEN
Pond ❖ c

Whilst every effort has been made to accurately represent the décors within this brochure, we are unable to guarantee an exact match due to the limitations of the printing process. Please view actual sample prior to selection. Before you install your Staron[®] surface, please verify that batch numbers are the same to ensure a complete colour match.

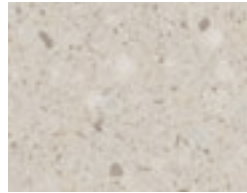
Staron® Pebble



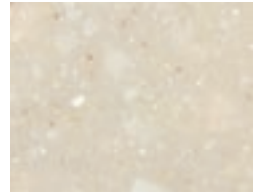
PI 811 C
PEBBLE
Ice



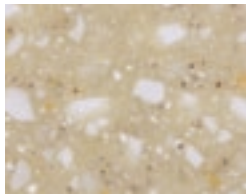
PS 813 C
PEBBLE
Swan



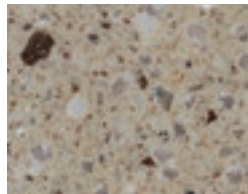
PT 845 C
PEBBLE
Tea Rose



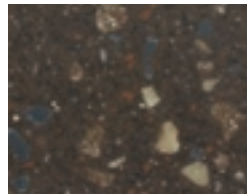
PS 820 C
PEBBLE
Saratoga



PG 840 C
PEBBLE
Gold



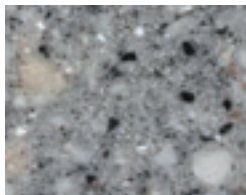
PM 879 C
PEBBLE
Collina Mirage



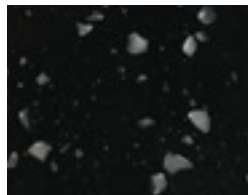
PT 857 C ◆
PEBBLE
Terrain



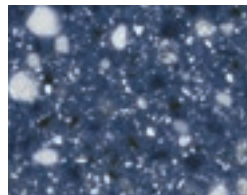
PB 852 C
PEBBLE
Boulder



PG 810 C
PEBBLE
Grey



PE 814 C ◆ SCS
PEBBLE
Ebony

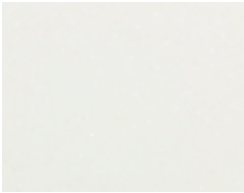


PB 870 C ◆
PEBBLE
Blue

- ◆ Dark colours and high gloss finishes - Staron® is a durable and repairable surface that will last for many years with simple care. Please refer to our 'How to Care for your Solid Surfaces' leaflet. Dark colours and high gloss finishes will, like everything else, potentially show scratches if a worktop saver has not been used. Scratches or abrasion marks are not covered under the Staron® 10 year warranty. However, if scratches occur over a period of time, the surface can be re-sanded and re-finished, which will remove the scratches. Refinishing your surface must be performed by an authorised Staron® fabricator / installer and you will be charged at an hourly service rate.
- ◆ Contains pearl particulates that are shaped flat and tend to float on the surface. Due to the unique distribution in production, these particulates come with directional pattern. As a result, reflections in particulates may vary depending on light and view angles.

- SCS These colours hold the SCS Material Content Certification which verifies that Staron® is working responsibly to minimise environmental impact during its manufacturing process.
- B European FR 'Class B' Certification.
- C European FR 'Class C' Certification.

Staron® Metallic



EY 510
METALLIC
Yukon

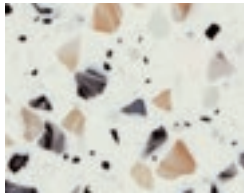


EG 595
METALLIC
Galaxy

Staron® Quarry



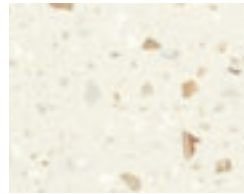
TO 310
QUARRY
Oyster



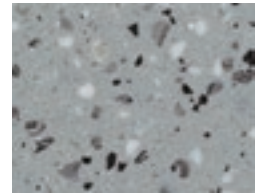
NT 150
QUARRY
Terrazzo Venezia



QS 288
QUARRY
Starred (New)

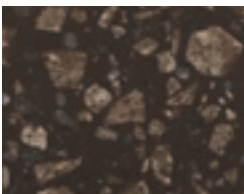


NT 970
QUARRY
Terrazzo Bologna

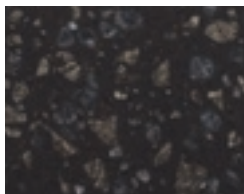


NT 981
QUARRY
Terrazzo Torino

Staron® Earthen



QL 257
EARTHEN
Bark



QL 287
EARTHEN
Stratum

Whilst every effort has been made to accurately represent the décors within this brochure, we are unable to guarantee an exact match due to the limitations of the printing process. Please view actual sample prior to selection. Before you install your Staron® surface, please verify that batch numbers are the same to ensure a complete colour match.

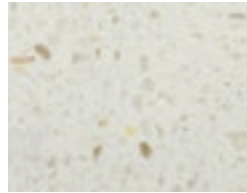
Staron® Tempest®



FP 100 C
TEMPEST
Peak



FM 111 C
TEMPEST
Meteor



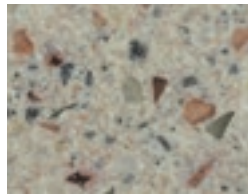
FH 114 C SCS
TEMPEST
Horizon



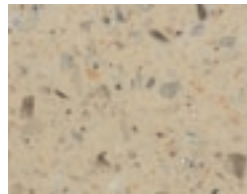
FB 173 C
TEMPEST
Bamboo



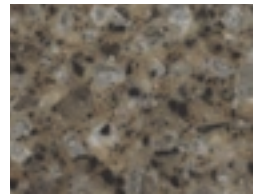
FM 178 C
TEMPEST
Mystic



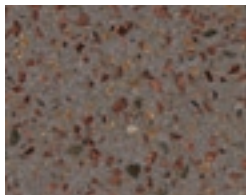
FG 144 C
TEMPEST
Glimmer



FG 174 C
TEMPEST
Genesis



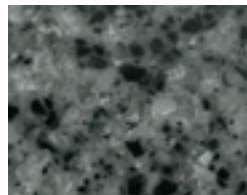
FW 145 ◆ C
TEMPEST
Whippoorwill



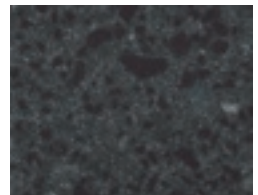
FB 154 ◆◆ C
TEMPEST
Bronzestar



FR 148 ◆ C
TEMPEST
Radiance (Shimmer)



FZ 184 ◆ C
TEMPEST
Zenith



FC 188 ◆◆ C
TEMPEST
Caviar



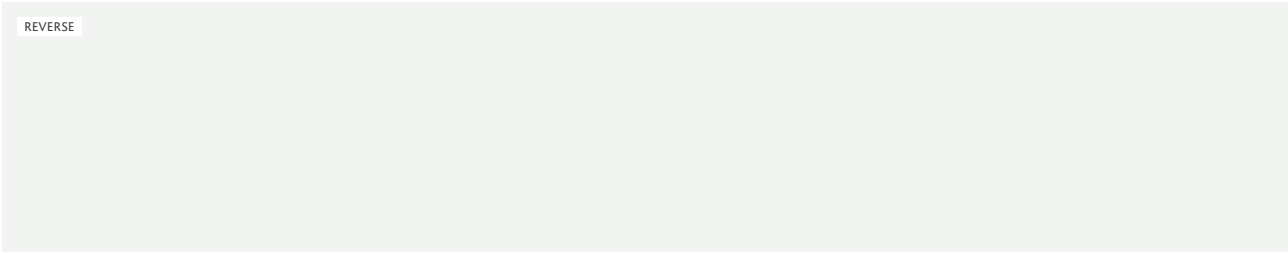
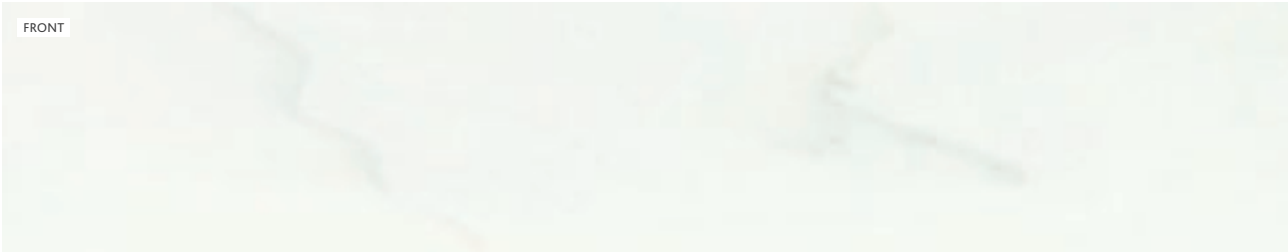
FI 187 ◆◆ C
TEMPEST
Igneous

- ◆ Dark colours and high gloss finishes - Staron® is a durable and repairable surface that will last for many years with simple care. Please refer to our 'How to Care for your Solid Surfaces' leaflet. Dark colours and high gloss finishes will, like everything else, potentially show scratches if a worktop saver has not been used. Scratches or abrasion marks are not covered under the Staron® 10 year warranty. However, if scratches occur over a period of time, the surface can be re-sanded and re-finished, which will remove the scratches. Refinishing your surface must be performed by an authorised Staron® fabricator / installer and you will be charged at an hourly service rate.
- ◆ Contains pearl particulates that are shaped flat and tend to float on the surface. Due to the unique distribution in production, these particulates come with directional pattern. As a result, reflections in particulates may vary depending on light and view angles.

- SCS** These colours hold the SCS Material Content Certification which verifies that Staron® is working responsibly to minimise environmental impact during its manufacturing process.
- B** European FR 'Class B' Certification.
- C** European FR 'Class C' Certification.

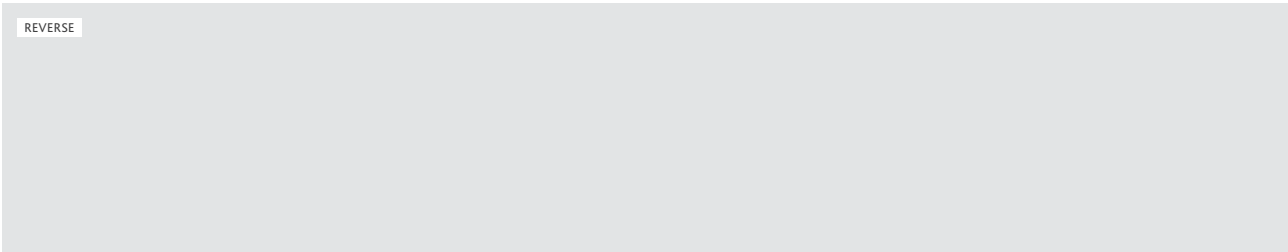
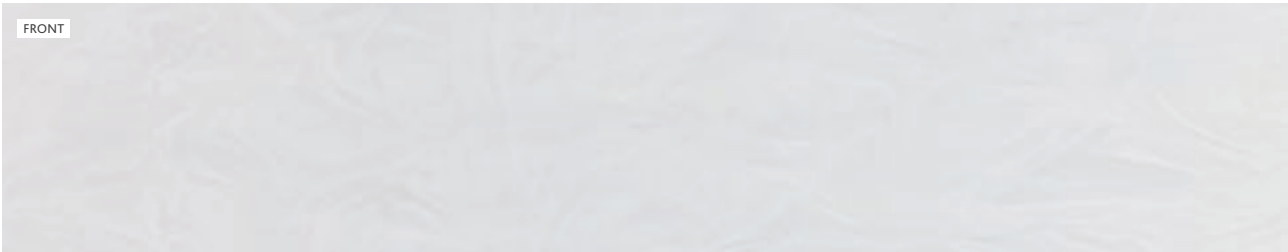
Staron® Supreme™

Whilst every effort has been made to accurately represent the décors within this brochure, we are unable to guarantee an exact match due to the limitations of the printing process. Please view actual sample prior to selection. Before you install your Staron® surface, please verify that batch numbers are the same to ensure a complete colour match.



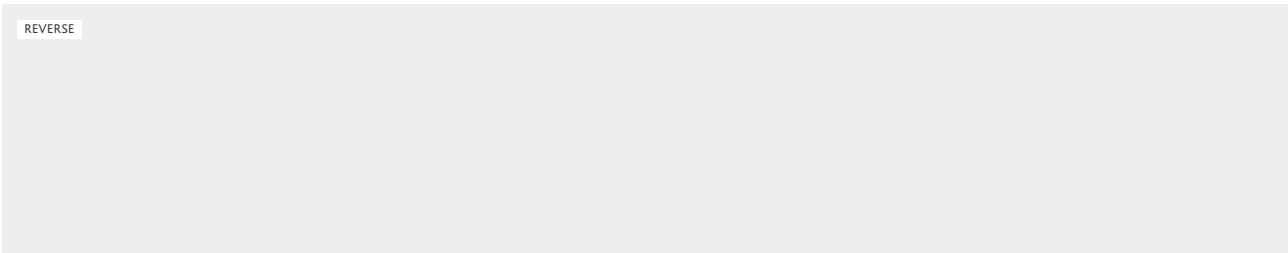
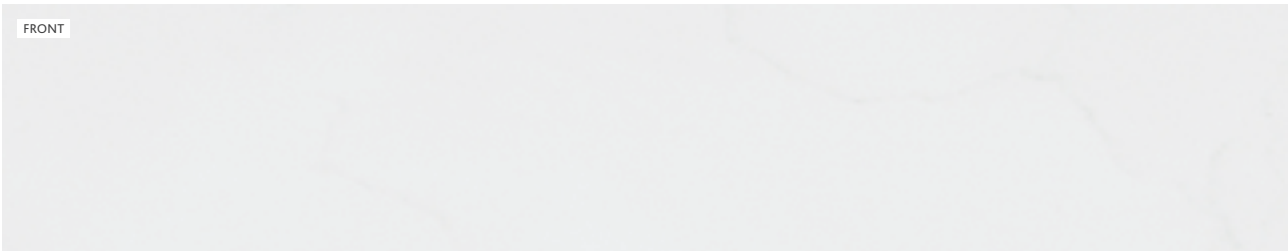
SUPREME
Cotton White ♦ (TRANSLUCENT)

VC 110
C



SUPREME
Arctic White ♦

VA 311
C



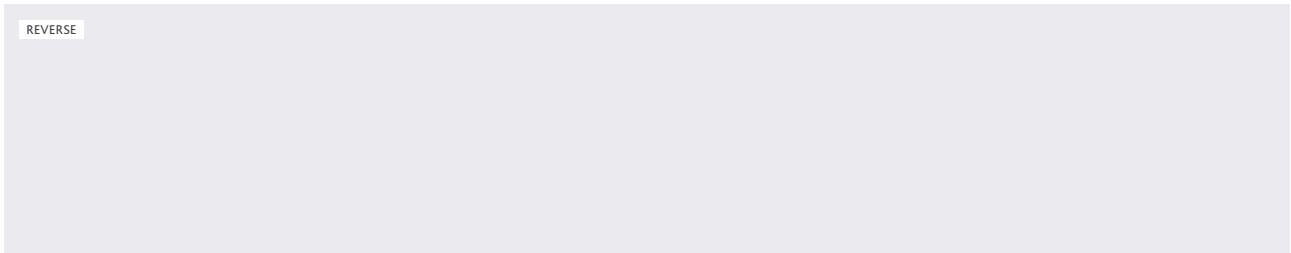
SUPREME
Morning Sky (TRANSLUCENT) ♦

VM 114
C

- ❖ Dark colours and high gloss finishes - Staron® is a durable and repairable surface that will last for many years with simple care. Please refer to our 'How to Care for your Solid Surfaces' leaflet. Dark colours and high gloss finishes will, like everything else, potentially show scratches if a worktop saver has not been used. Scratches or abrasion marks are not covered under the Staron® 10 year warranty. However, if scratches occur over a period of time, the surface can be re-sanded and re-finished, which will remove the scratches. Refinishing your surface must be performed by an authorised Staron® fabricator / installer and you will be charged at an hourly service rate.
- ◆ Due to the minimal veined design on the front side of these décors, the reverse side principally shows only the base colour.

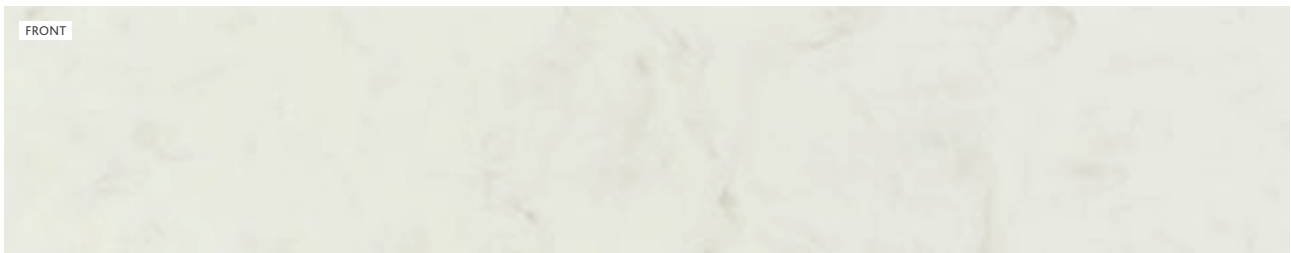
B European FR 'Class B' Certification.

C European FR 'Class C' Certification.



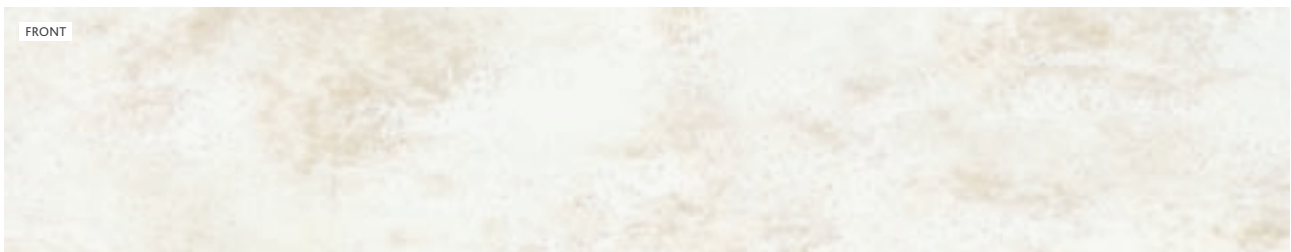
SUPREME
Rotor Cloud ◆

VR 322
C



SUPREME
Delphi (TRANSLUCENT)

VD 111
C

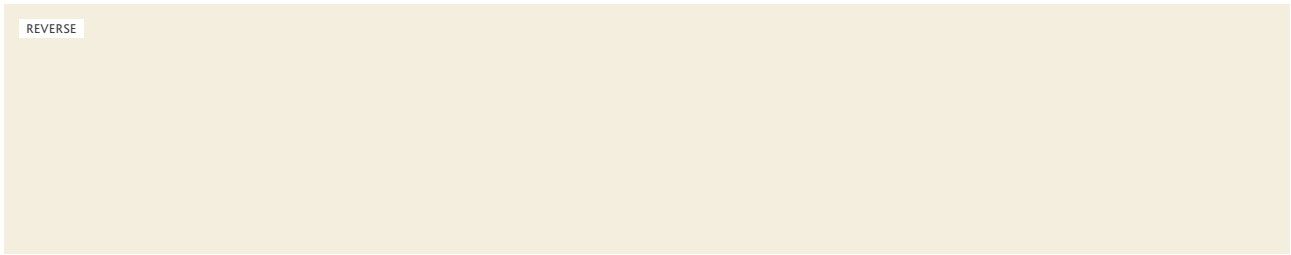


SUPREME
Ocean View (TRANSLUCENT)

VO 171
C

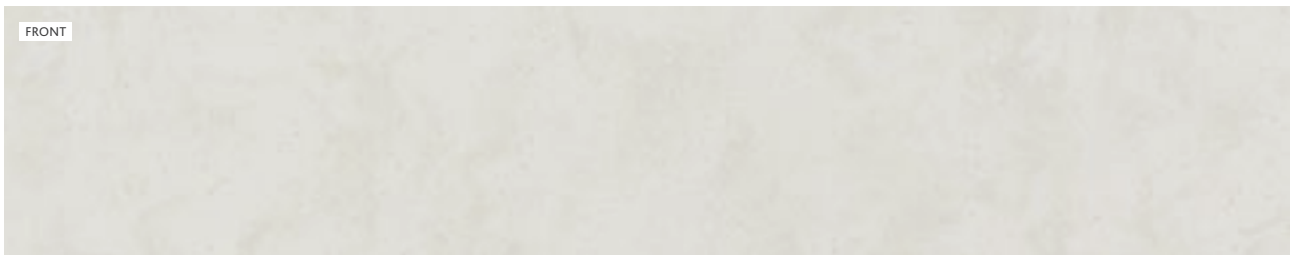
Whilst every effort has been made to accurately represent the décors within this brochure, we are unable to guarantee an exact match due to the limitations of the printing process. Please view actual sample prior to selection. Before you install your Staron® surface, please verify that batch numbers are the same to ensure a complete colour match.

Staron® Supreme™



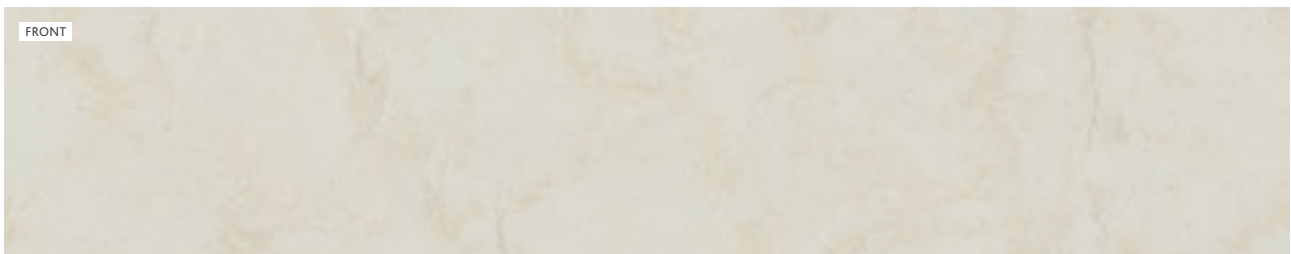
SUPREME
Beige Granite ♦

VB 172
C



SUPREME
Cloudbank

VC 118
C

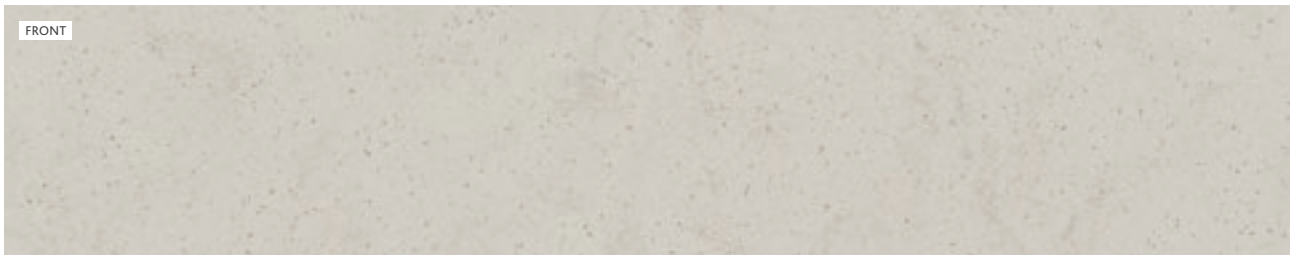


SUPREME
Magnolia

VM 143
C

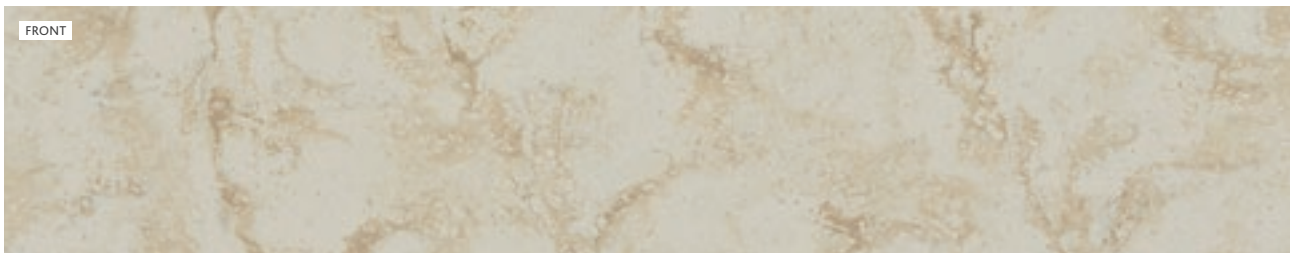
- ❖ Dark colours and high gloss finishes - Staron® is a durable and repairable surface that will last for many years with simple care. Please refer to our 'How to Care for your Solid Surfaces' leaflet. Dark colours and high gloss finishes will, like everything else, potentially show scratches if a worktop saver has not been used. Scratches or abrasion marks are not covered under the Staron® 10 year warranty. However, if scratches occur over a period of time, the surface can be re-sanded and re-finished, which will remove the scratches. Refinishing your surface must be performed by an authorised Staron® fabricator / installer and you will be charged at an hourly service rate.
- ◆ Due to the minimal veined design on the front side of these décors, the reverse side principally shows only the base colour.

- B** European FR 'Class B' Certification.
- C** European FR 'Class C' Certification.



SUPREME
Natural Bridge

VN 144
C



SUPREME
Dandelion

VD 175
C



SUPREME
Dawn

VD 126
C

Whilst every effort has been made to accurately represent the décors within this brochure, we are unable to guarantee an exact match due to the limitations of the printing process. Please view actual sample prior to selection. Before you install your Staron® surface, please verify that batch numbers are the same to ensure a complete colour match.

Staron® Supreme™



SUPREME
Ash Concrete

VA 129
C



SUPREME
Urban Grey ♦

VU 127
C

staron[®]
Solid Surfaces

 **blackheath**[®]

Exclusive UK and Ireland Staron[®] Distributor

Blackheath Products Ltd.
Units 1-4 Fairfield Park, Halesowen, West Midlands B62 9JL
Telephone: +44 (0) 121 561 4245
Email: sales@blackheathproducts.co.uk